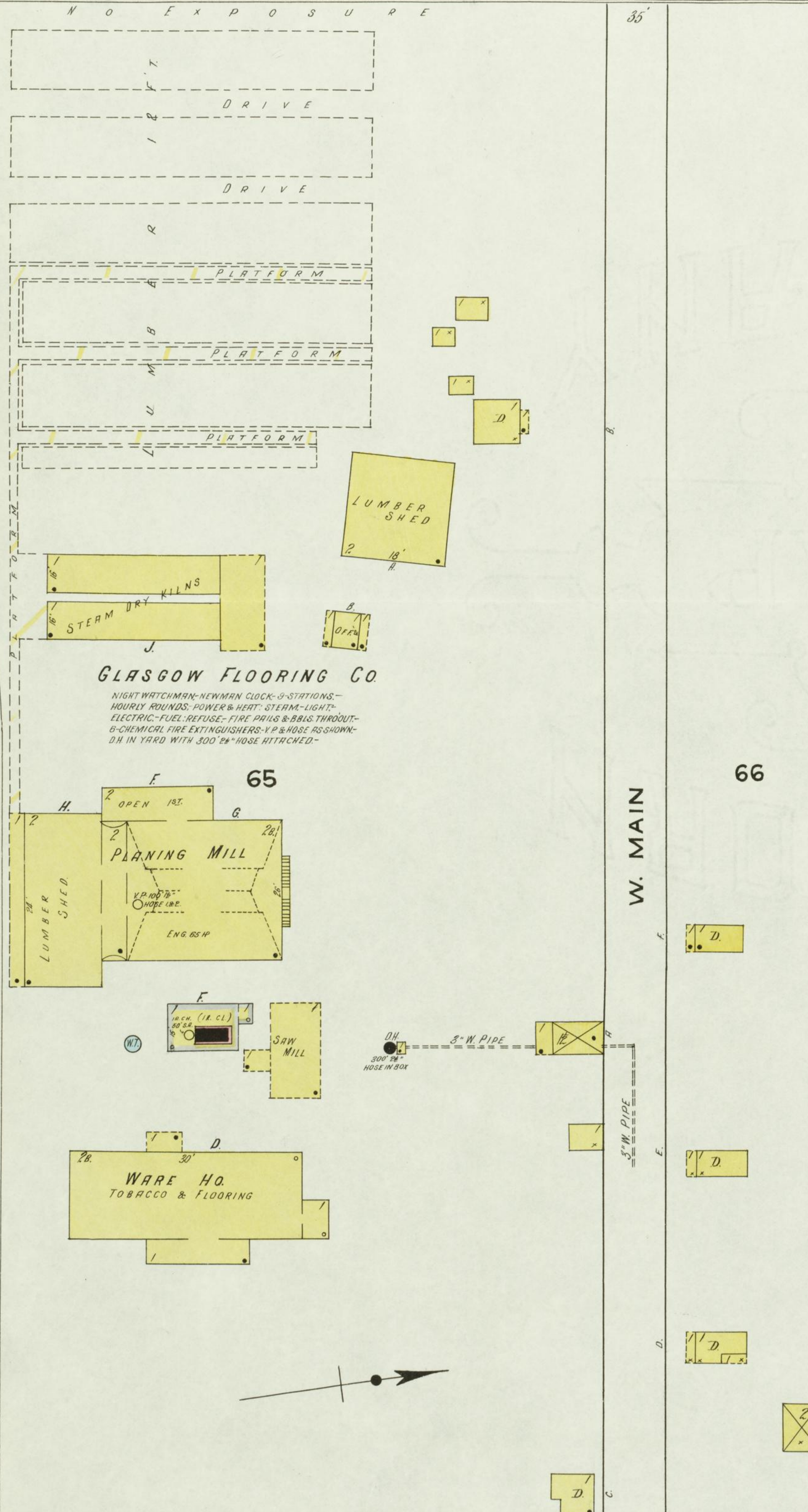


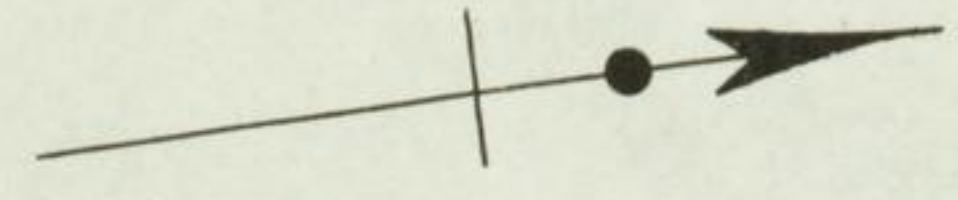
T. J. SAMPSON
TOBACCO PRIZE BARN
THIS BLDG TO BE MOVED INTO TOWN

Located 1/8 Miles N.E. of Court Ho.



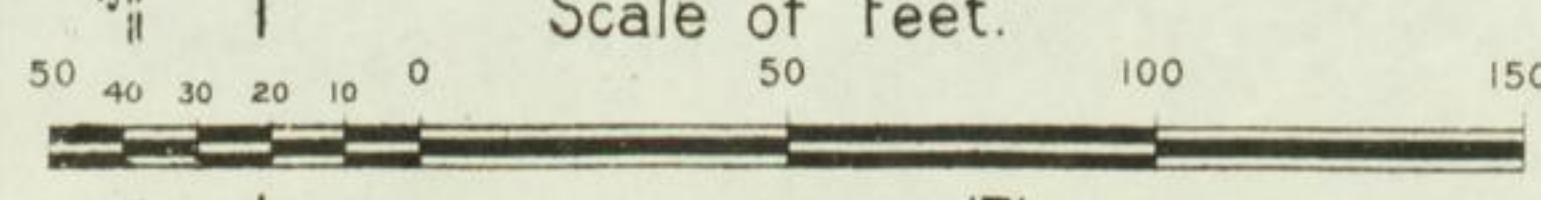
GLASGOW FLOORING CO.

NIGHT WATCHMAN-NEWMAN CLOCK-9 STATIONS-
HOURLY ROUNDS-POWER & HEAT-STEAM-LIGHT-
ELECTRIC-FUEL-REFUSE-FIRE PAILS & BBS THROUGH-
G-CHEMICAL FIRE EXTINGUISHERS-Y.P. & HOSE AS SHOWN-
DH IN YARD WITH 300' HOSE ATTACHED-



Located 1/4 Mile W of Court Ho.

Scale of Feet.

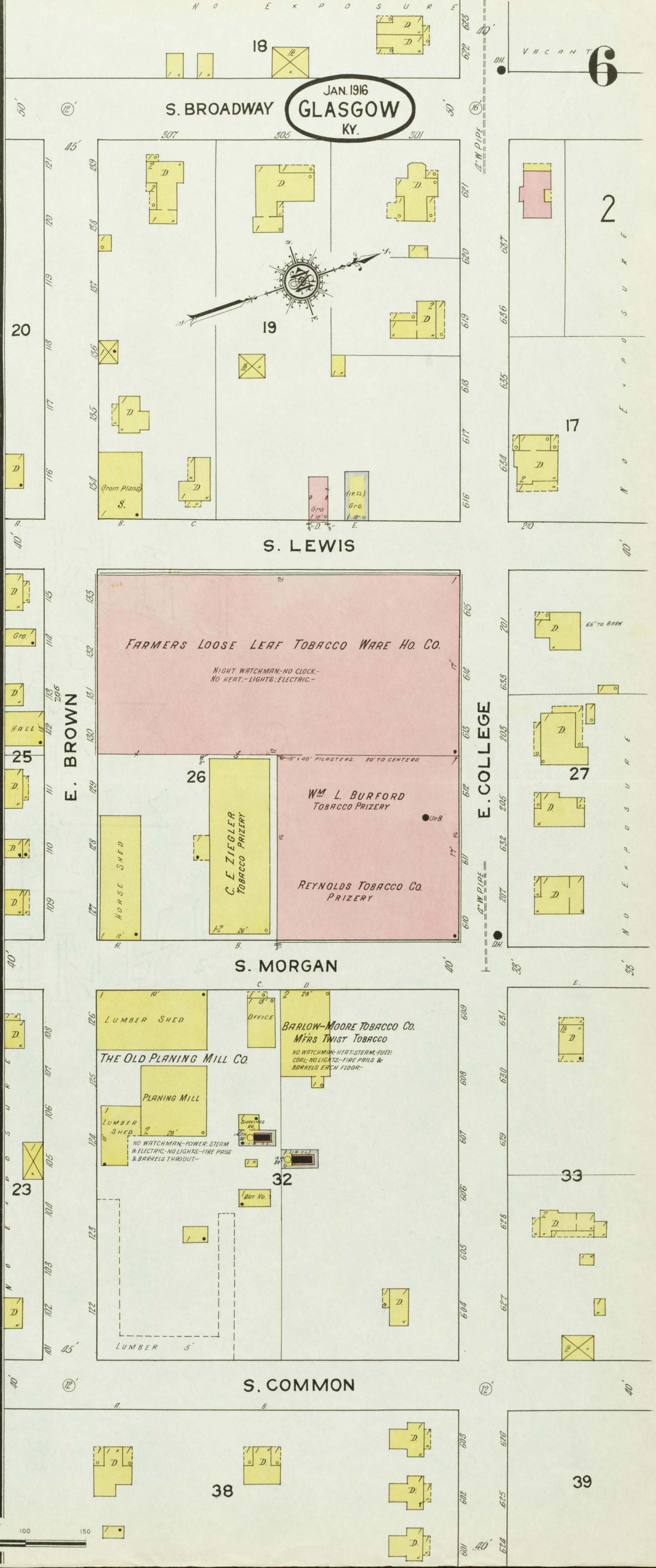


N O E X P O S U R E

S. BROADWAY

JAN. 1916
GLASGOW
KY.

VACANT 6



S. LEWIS

FARMERS LOOSE LEAF TOBACCO WARE HO. CO.

NIGHT WATCHMAN-NO CLOCK-
NO HEAT-LIGHTS-ELECTRIC-

E. BROWN

S. MORGAN

BARLOW-MOORE TOBACCO CO.
M's TWIST TOBACCO
NO WATCHMAN-HEAT-STEAM-FUEL-
COAL-NO LIGHTS-FIRE PAILS &
BARRELS EACH FLOOR-

S. COMMON

E. COLLEGE

39