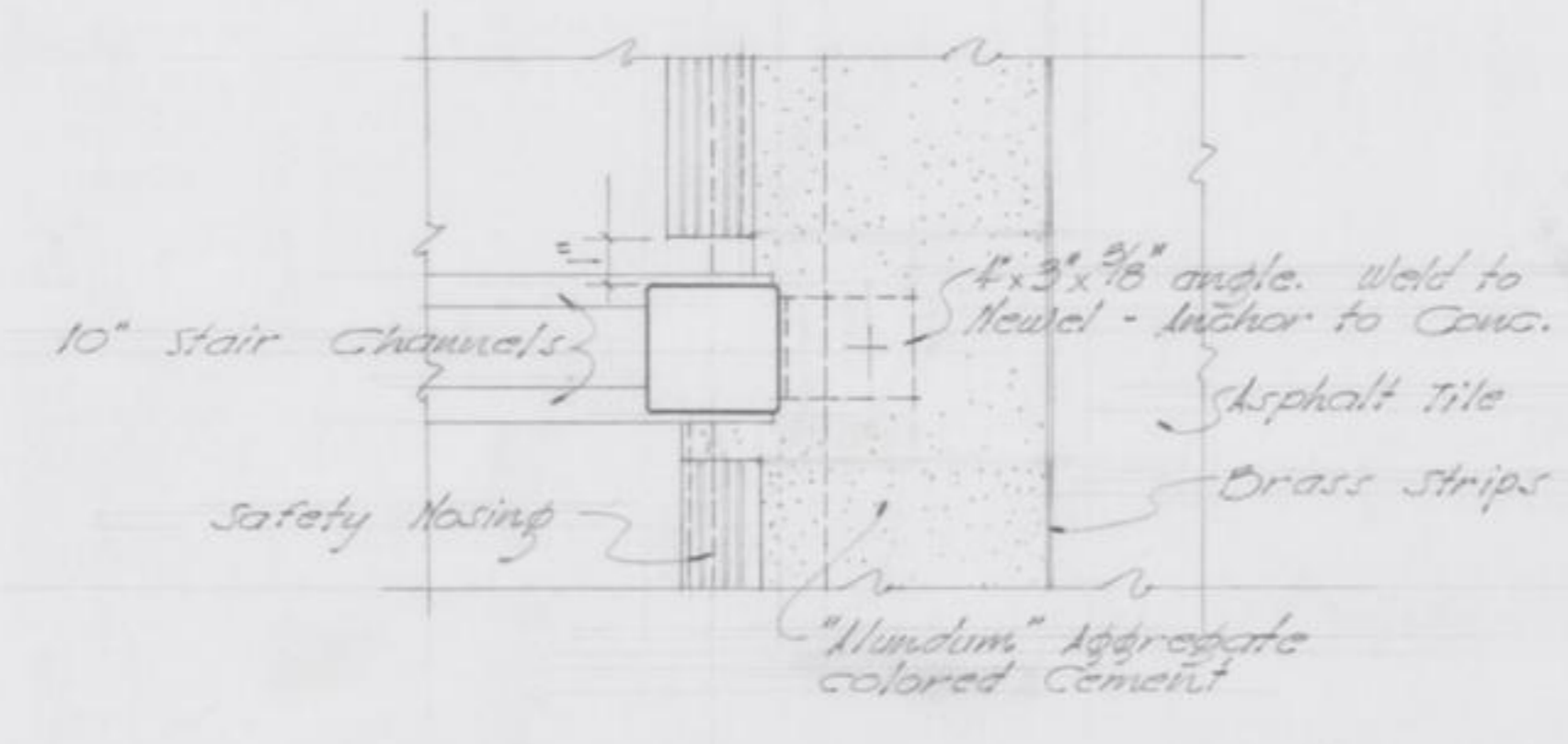
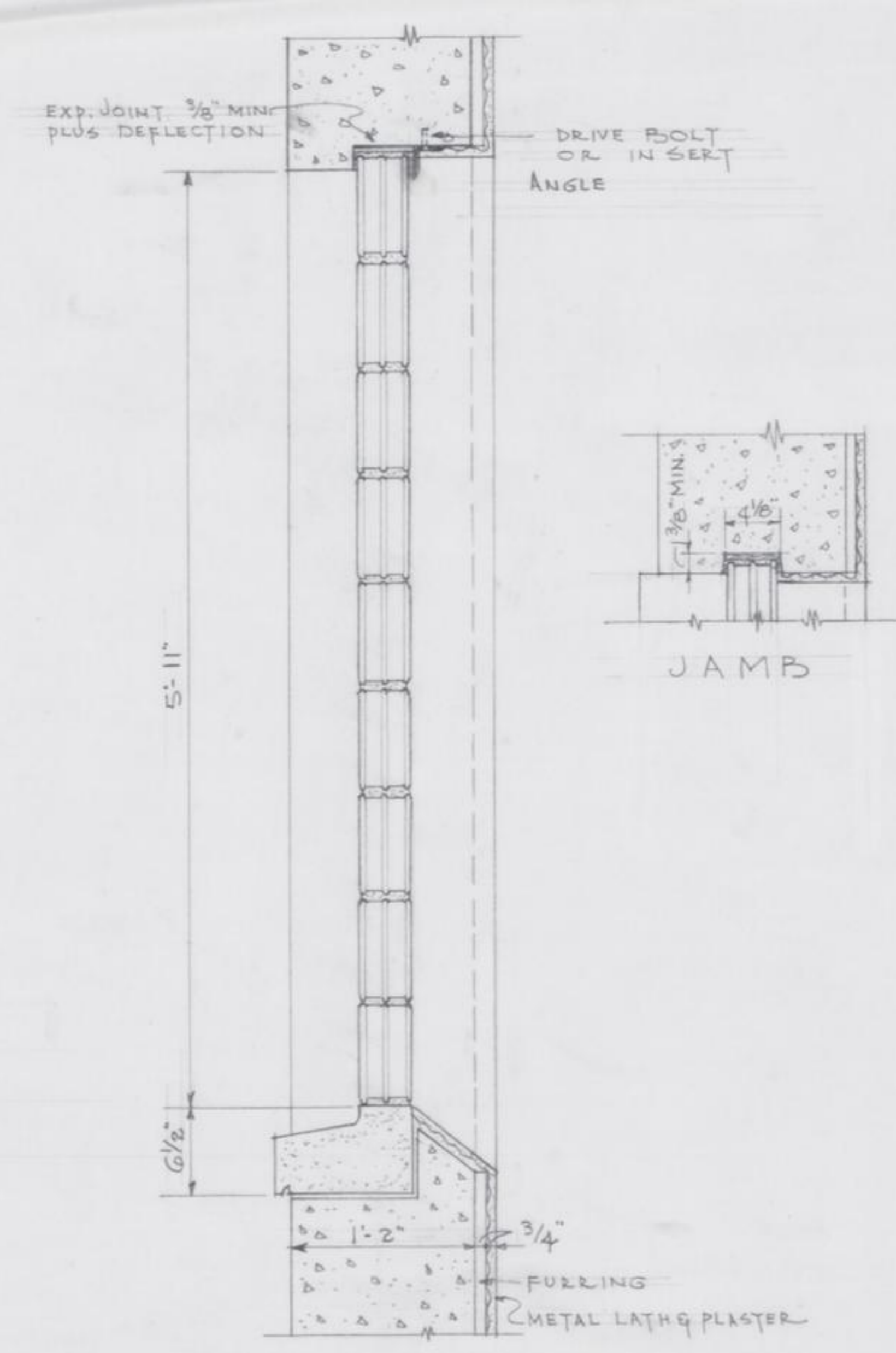


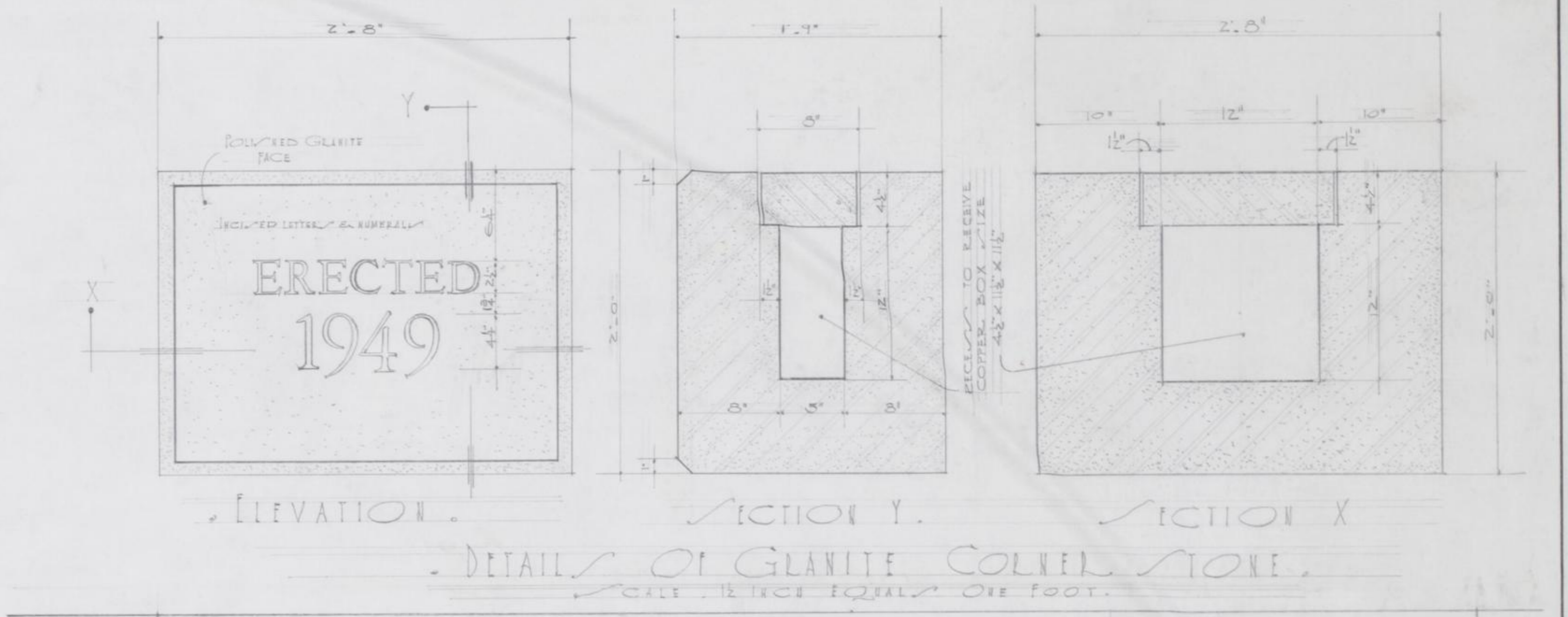
SECTION A-A



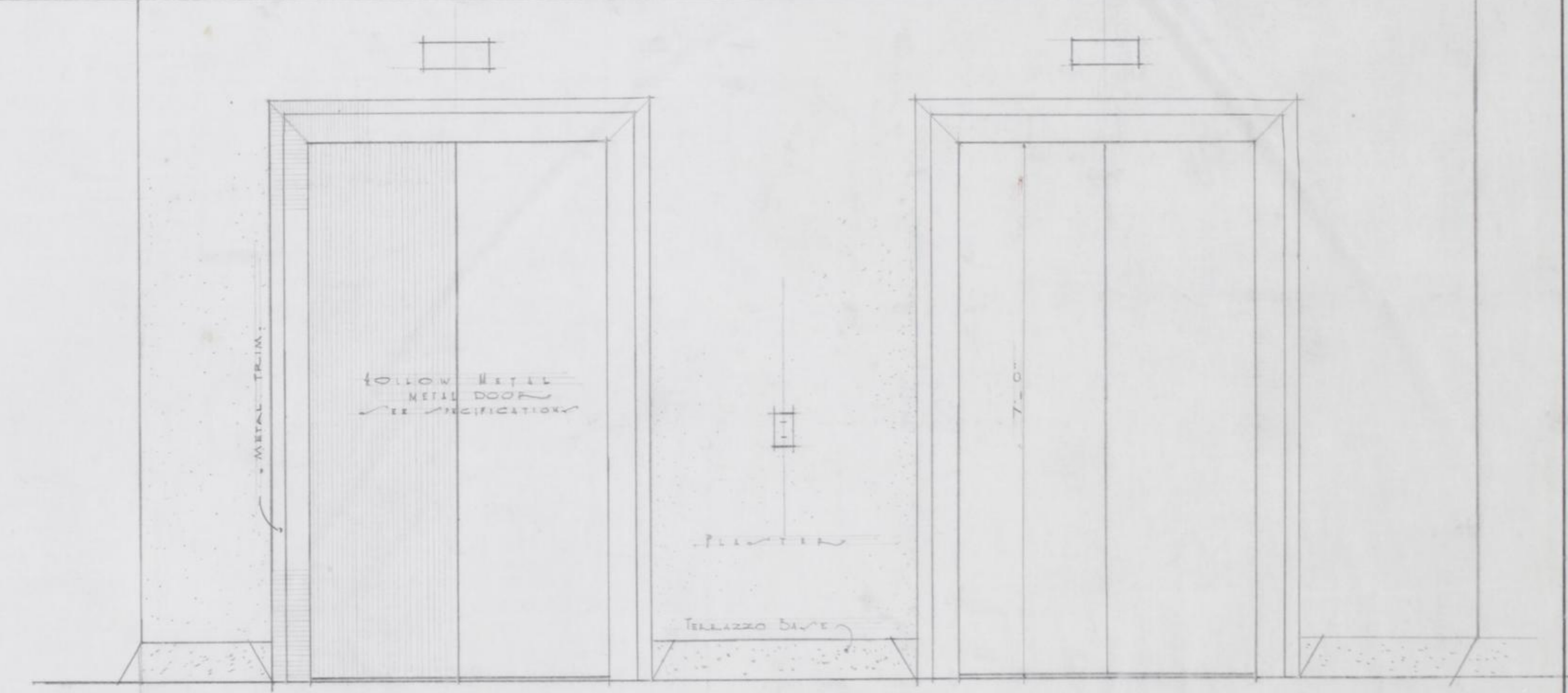
PLAN AT NEVEL



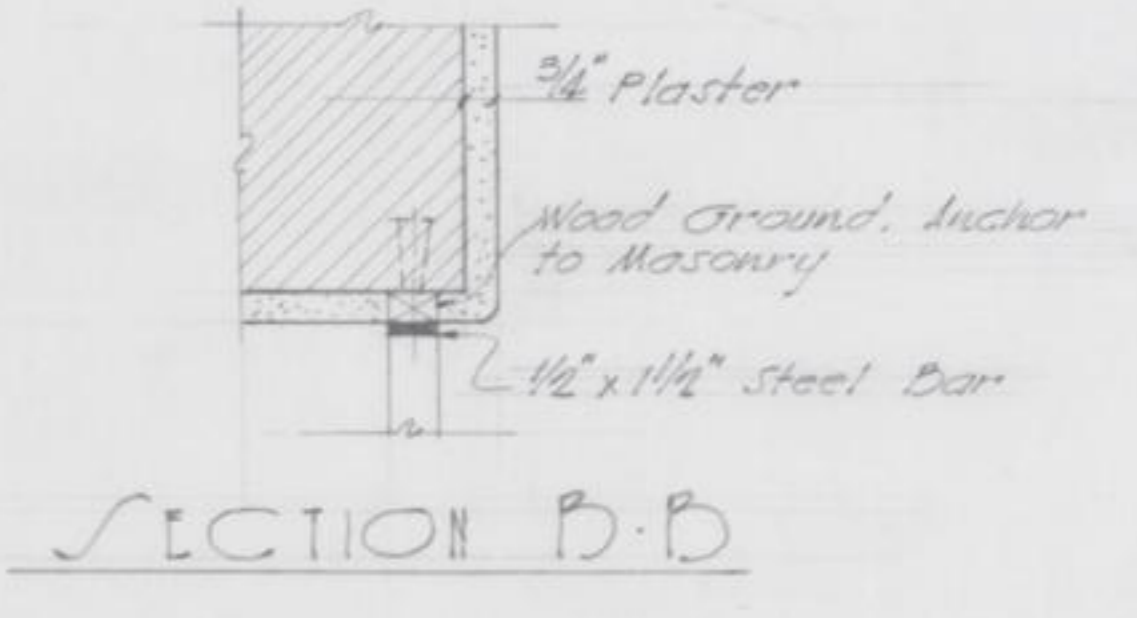
DETAIL OF GLASS BLOCK PANEL IN CONCRETE WALL SCALE 1/4\"/>



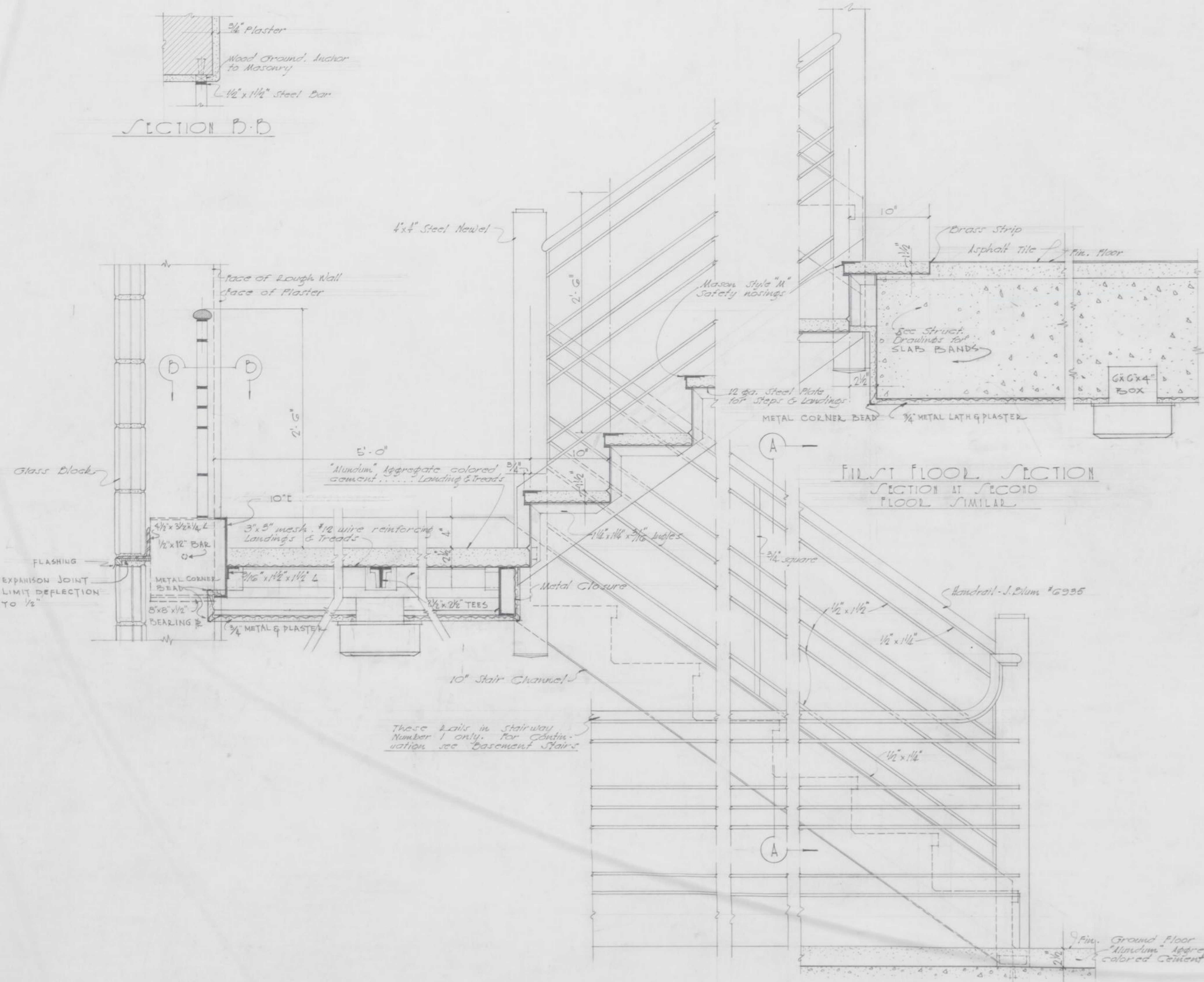
ELEVATION SECTION Y SECTION X
DETAILS OF GRANITE CORNER STONE
SCALE 1/4\"/>



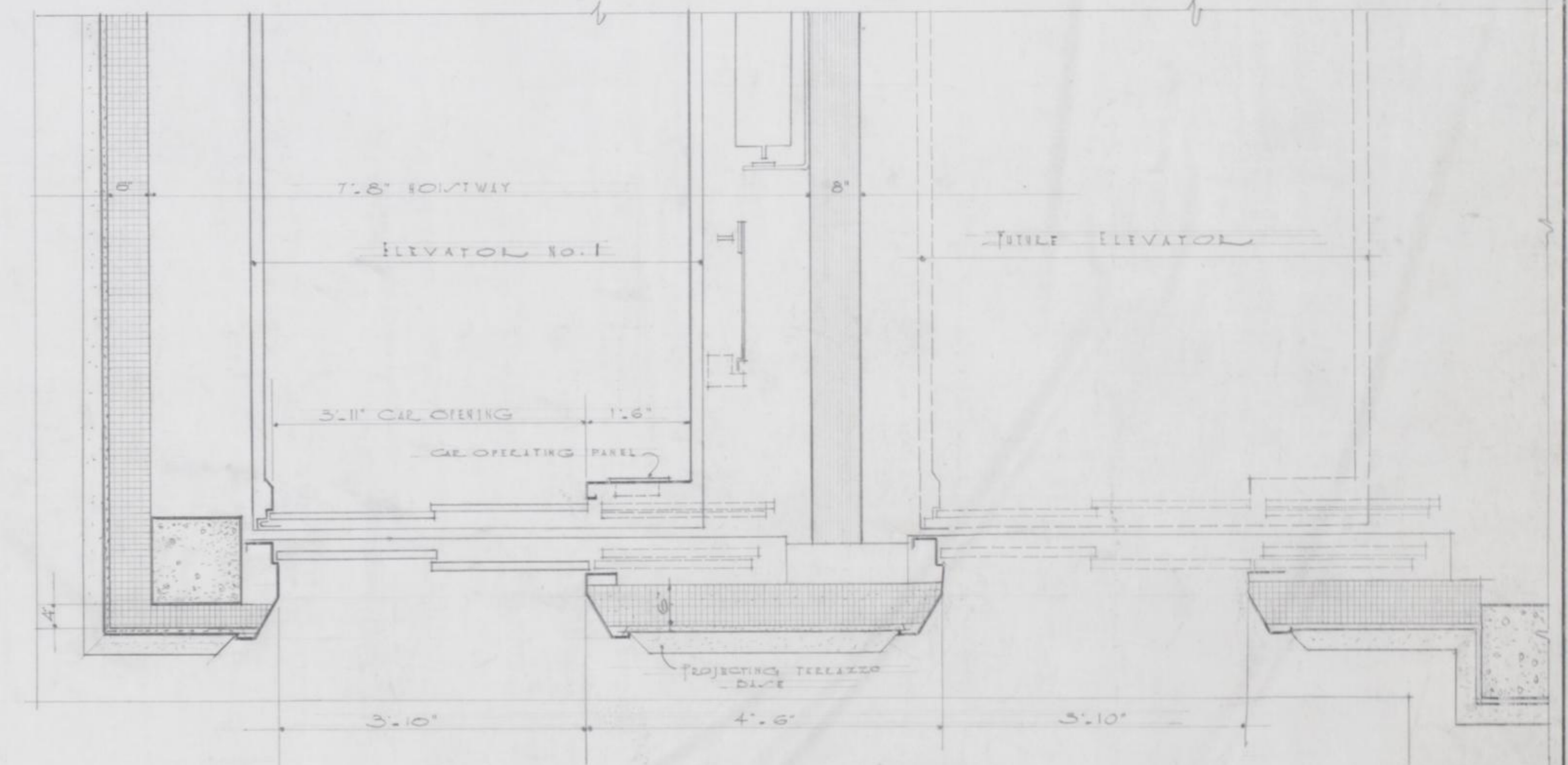
ELEVATION OF ELEVATOR DOORS



SECTION B-B



FIRST FLOOR SECTION SECTION II SECOND FLOOR SIMILAR



FIRST PLAN OF ELEVATOR SCALE 3/16\"/>

DETAILS OF STAIRWAY NO ONE STAIRWAY NO TWO SIMILAR AS SHOWN SCALE 1/16\"/>

ALTERATION & ADDITION
HOWING GLEEN, WALLER COUNTY HOSPITAL
HOWING GLEEN, GEORGIA

ROBERT W. McKEE, ARCHITECT
LEONARD L. LEITCH
WILLIAM HATHORN & CO.
CONSULTING ARCHITECTS, CHICAGO, ILL.

DRAWN BY
LEWISONS

NOV 2, 1949
RECORDED
INDEXED

13
OF 25 SHEETS