

WE THE UNDERSIGNED HAVE EXAMINED THE MAP OF MORGANFIELD KY. MADE BY THE SANBORN MAP & PUBLISHING CO. INTERIOR NEW YORK AND TO BE ACCURATE & COMPLETE.

C. L. Long
Rhea & Hughes

SANBORN MAP & PUBLISHING CO. LIMITED
 117 & 119 Broadway
 NEW YORK

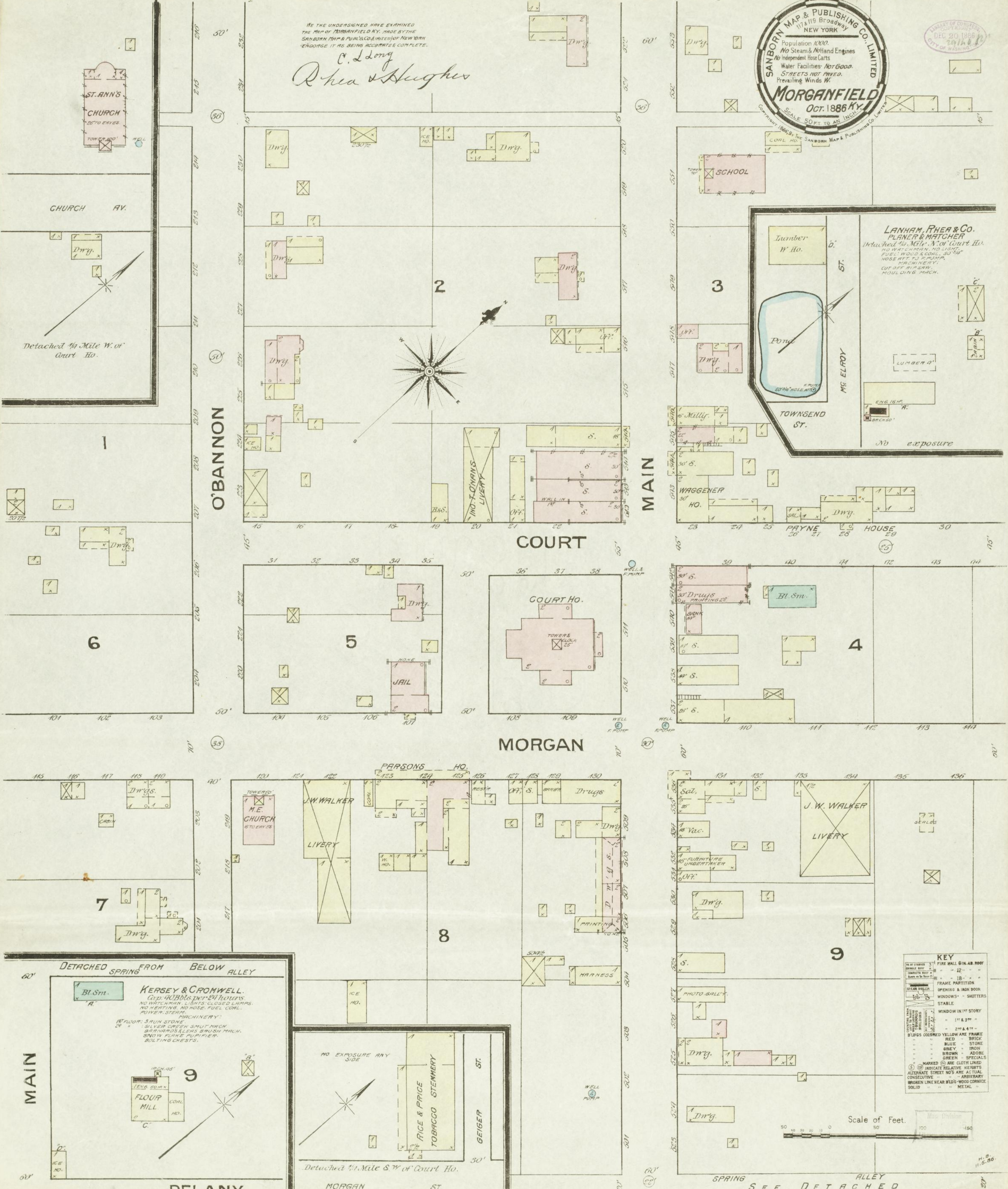
Population 1000.
 No Steam & No Hand Engines
 No Independent Hose Carts
 Water Facilities: Not Good.
 STREETS NOT PAVED.
 Prevailing Winds W.

MORGANFIELD
 Oct. 1886 Ky.

SCALE 50 FT. TO AN INCH.

Copyright 1886 by THE SANBORN MAP & PUBLISHING CO. LIMITED

DEC 20 1886
CITY OF WASHINGTON

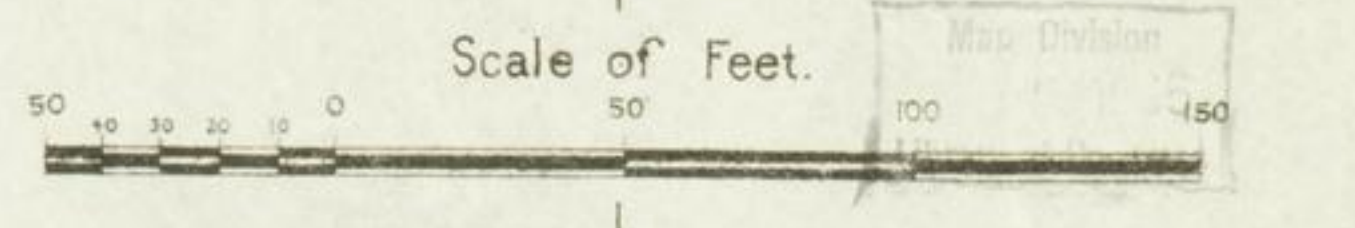


LANHAM, RHEA & CO.
 PLANNER & MATCHER
 Attached to No. 36 1/2 N. of Court Ho.
 NO WATCHMAN, NO LIGHT,
 FUEL: WOOD & COAL, 50' W.
 HOSE ATT. TO PLUMBER,
 MACHINERY,
 CUT OFF R. SAW,
 MOULDING MACH.

No exposure

KEY

| | | |
|--------------------------------------|-----|--------------------------------------|
| 1/4" of STEEL | 3" | FIRE WALL 6 IN. AB. ROOF |
| BRICK | 12" | BRICK |
| CONCRETE | 12" | CONCRETE |
| STONE | 18" | STONE |
| FRAME PARTITION | | FRAME PARTITION |
| OPENING & IRON DOOR | | OPENING & IRON DOOR |
| WINDOWS - SHUTTERS | | WINDOWS - SHUTTERS |
| STABLE | | STABLE |
| WINDOW IN 1 ST STORY | | WINDOW IN 1 ST STORY |
| 11' & 3" | | 11' & 3" |
| 2 1/2' & 4 1/2' | | 2 1/2' & 4 1/2' |
| BUILDINGS COLORED YELLOW ARE FRAME | | BUILDINGS COLORED YELLOW ARE FRAME |
| RED - BRICK | | RED - BRICK |
| BLUE - STONE | | BLUE - STONE |
| GREY - IRON | | GREY - IRON |
| BROWN - ADOR. | | BROWN - ADOR. |
| GREEN - SPECIALS | | GREEN - SPECIALS |
| MARKED (C) ARE CLOTH LINED | | MARKED (C) ARE CLOTH LINED |
| (S) INDICATE RELATIVE HEIGHTS | | (S) INDICATE RELATIVE HEIGHTS |
| ALTERNATE STREET NO'S ARE ACTUAL | | ALTERNATE STREET NO'S ARE ACTUAL |
| CONSECUTIVE | | CONSECUTIVE |
| BROKEN LINE NEAR BLDG - WOOD CORNICE | | BROKEN LINE NEAR BLDG - WOOD CORNICE |
| SOLID | | SOLID |
| METAL | | METAL |



H. B. 11-5-86