



OCT-6-22

SURVEYED BY  
**KENTUCKY ACTUARIAL BUREAU**

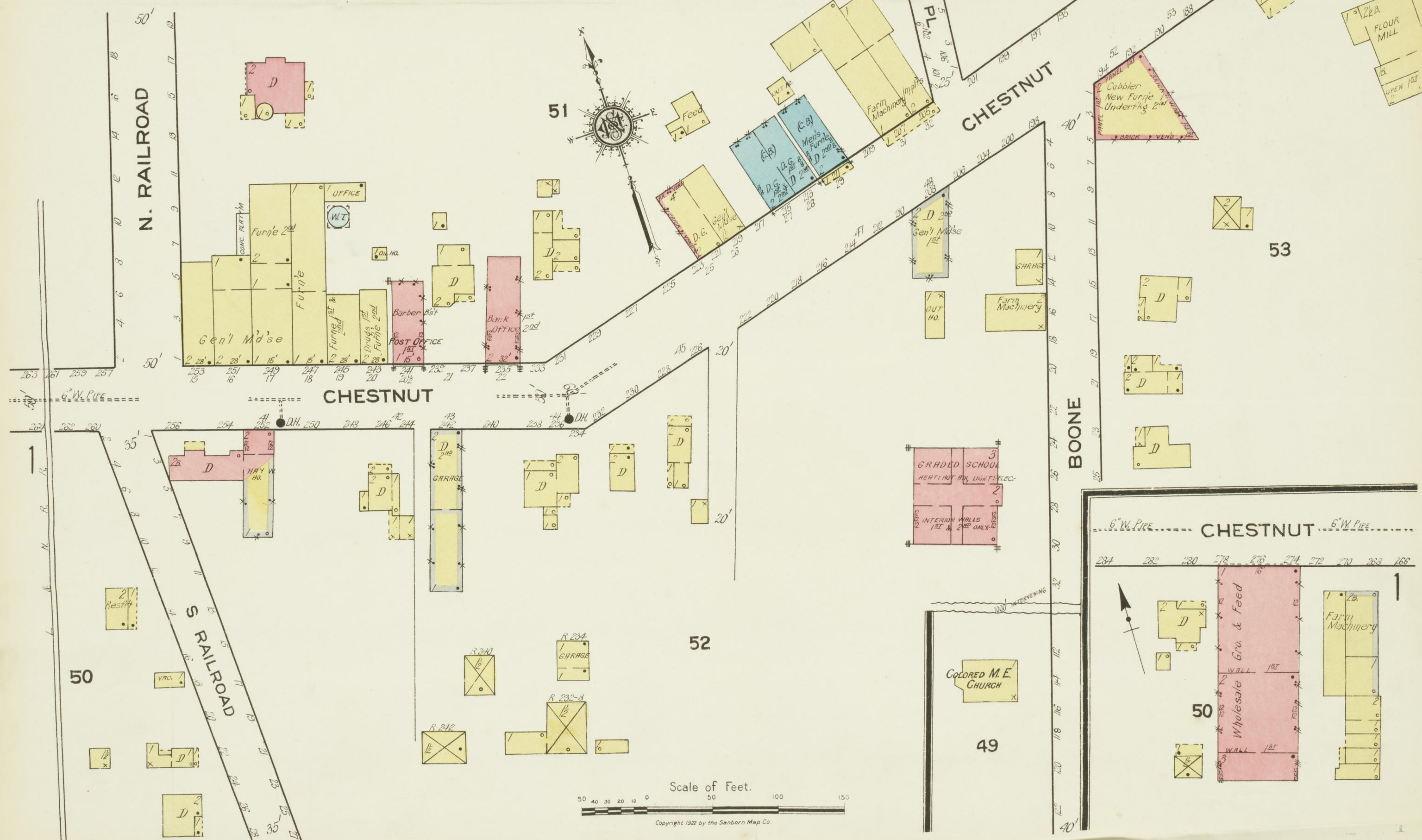
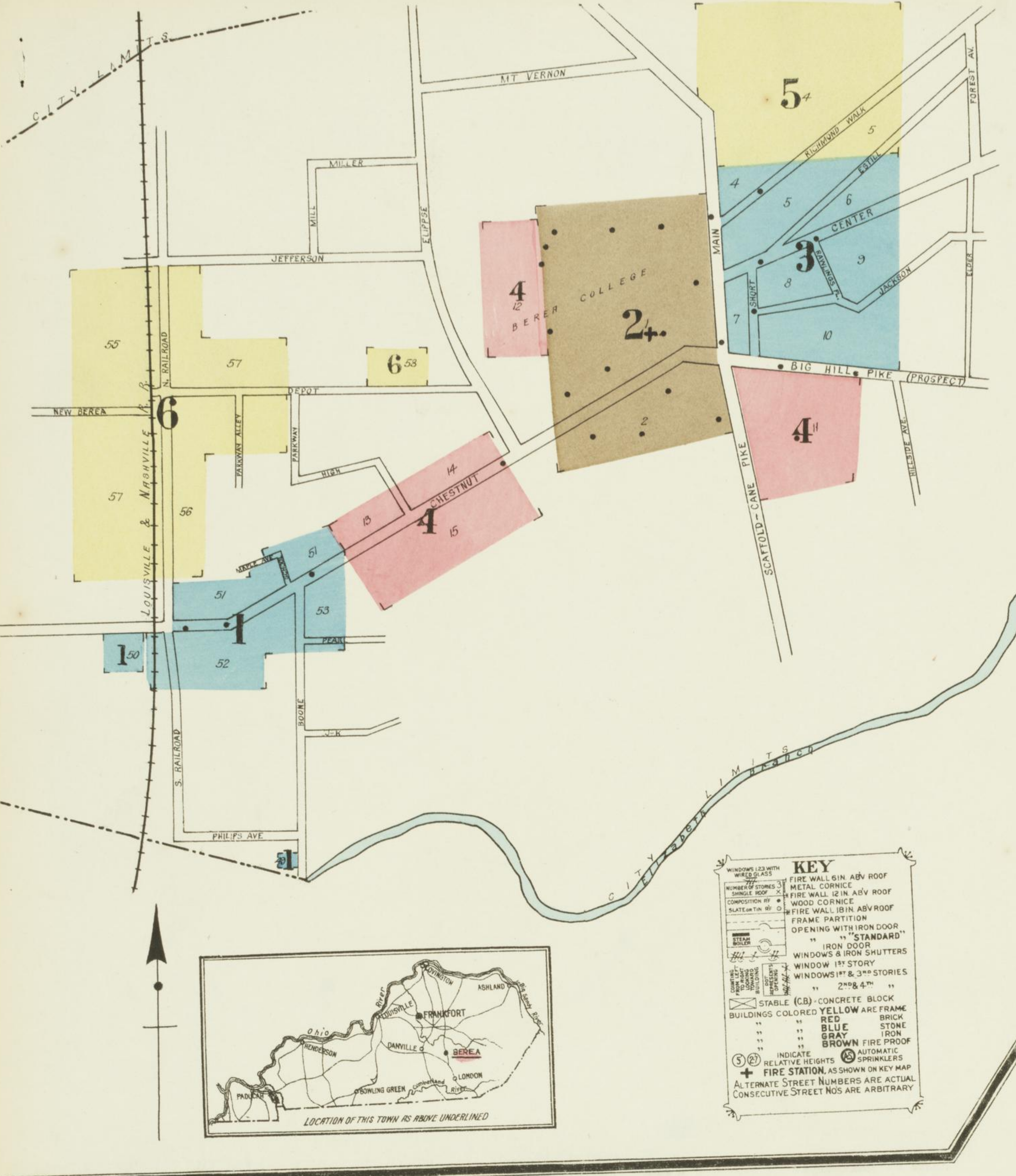
**WATER FACILITIES:**  
Owned and operated by the Berea College. Supply reliable from large natural impounding reservoir in hills surrounding and neighboring Berea. Water flows by gravity from the reservoir thru 6" pipe about 4 miles in length into 45000 gal. conc. basin. From this basin a 500 gal. per min. underwriters pump takes suction. There are 2 small steam pumps kept in reserve. Pumps discharge direct into the distribution system which extends over the entire College Campus and to the town of Berea, which obtains the college ground-750000 gal. elev. steel pipe loops storage for domestic supply. System is composed of 6" and 4" mains. Hydrant distribution is fair but many of them are on dead ends.

**FIRE DEPT.:**  
Organized department consisting of a Chief and from 12 to 20 men made up from student body and employees at the College. 2 hand drawn hose reels each carrying 800' of wood 2 1/2" fire hose. 35 extension a 12' roof ladder and a 35' gal. hand thrown chem. fire extinguisher kept in a frame shed on the college grounds. Arms are kept in the college power house where general alarm are sounded on steam whistle.  
Streets are macadamized, in fair repair and lighted by incandescent lamps. Some medium grades. College grounds being on somewhat higher elevation than the town itself.

### INDEX

STREETS		SPECIALS	
STREET	SHEET	SPECIAL	SHEET
Big Hill Pike	1-79	Baptist Church	4
Boone	2-56	Berea College Buildings	2, 3, 4 & 6
Center	1-78	Boone Tavern	3
Chestnut	1, 2 & 4	Christian Church	4
Depot	6	Union Church (old)	4
Estill	3 & 5	Union Church (new)	4
Jackson	3	Colored Methodist Episcopal Church	1
Jefferson	6	School	1
Main	2, 3 & 5	Fire Department	2
Maple Ave.	2, 3 & 5	Graded School	1
New Berea	6	Hospital	4
Parkway	4	Jail	6
Prospect, see Big Hill Pike	8	Knapp Hall	4
Railroad, N.	1-20	Lincoln Hotel	6
Scaffold Cane Pike	1-29	L. & N. R. R. Depots	6
School Place	1-28	Methodist Episcopal Church	1
Short	1-96	Methodist Episcopal Church (College)	2
		Planing Mill	3
		Post Office	2
		Stevens & Muncey Lumber Sheds and	6
		Sunshine Ballard Cabin	3

\* Indicates only one side of Street shown.



Scale of Feet.  
0 50 100 150  
Copyright 1922 by the Sanborn Map Co.