

Good Hope.

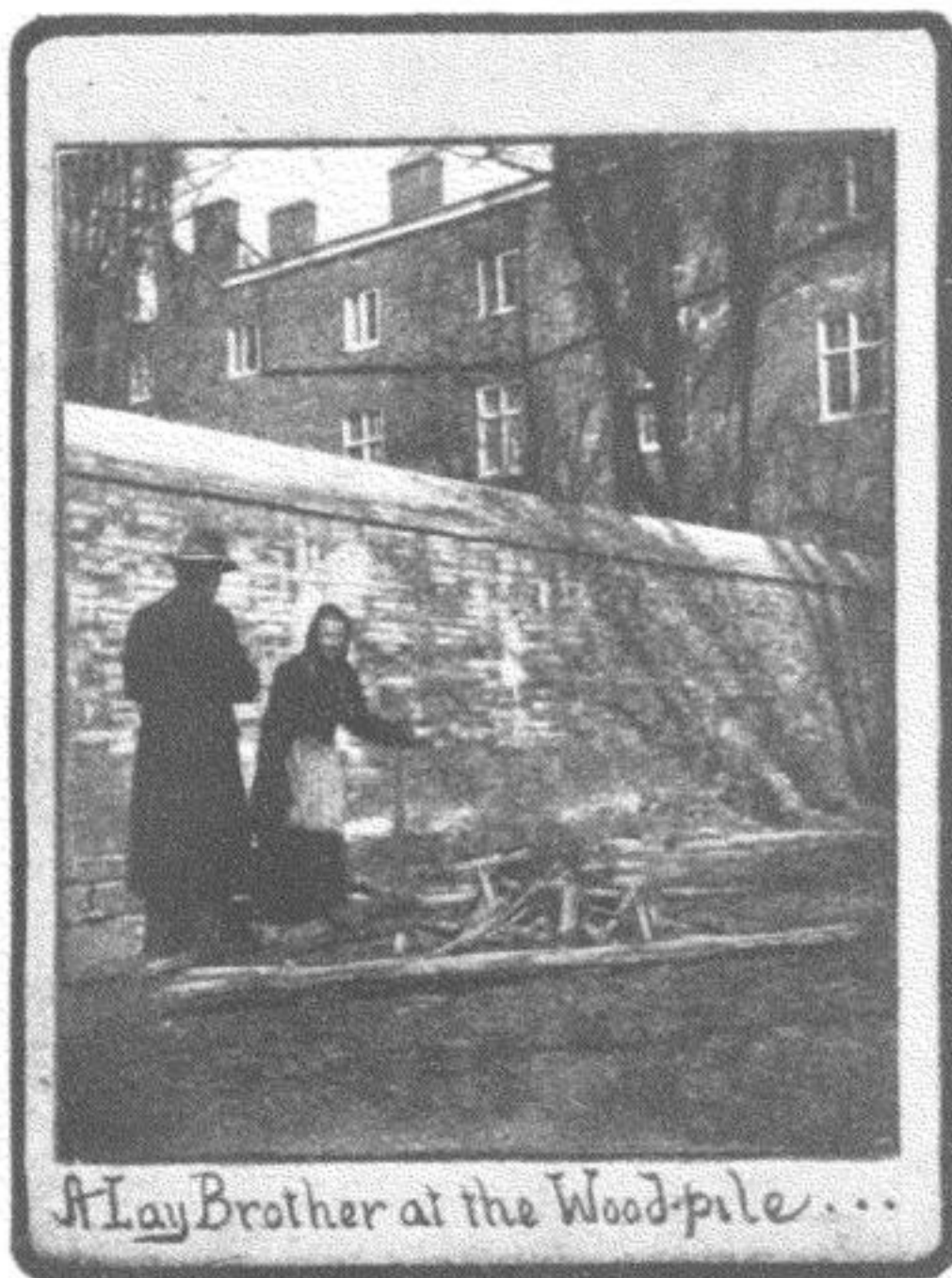
for five years, poor health drove him to France, whence he tendered his resignation.*

The fourth and present Abbot of Gethsemani, Father M. Obrecht, was elected in 1898.

Leaving Louisville any morning about eight-thirty, a two hours run over the Louisville & Nashville Railroad will bring you to the station of Gethsemani. Here you will find a distillery, a store, and a few cottages. A narrow dirt road winds over a hill towards the north. Following this road for a mile and a half—a delightful walk—you will arrive at the Abbey of Gethsemani. A magnificent avenue of elms, planted in double rows, leads up to the porter's lodge. These trees are eighty-six in number, and were brought from France by the first colonists, fifty-three years ago. The avenue formed by them is four hundred and forty-five feet long, and eighty-six

* Abbot Edward died the seventh of March, while this article was being written.—AUTHOR.

feet wide. Over the gate to which we have come, in a niche, is a life-size statue of the Virgin, with the Infant;



A Lay Brother at the Wood-pile...