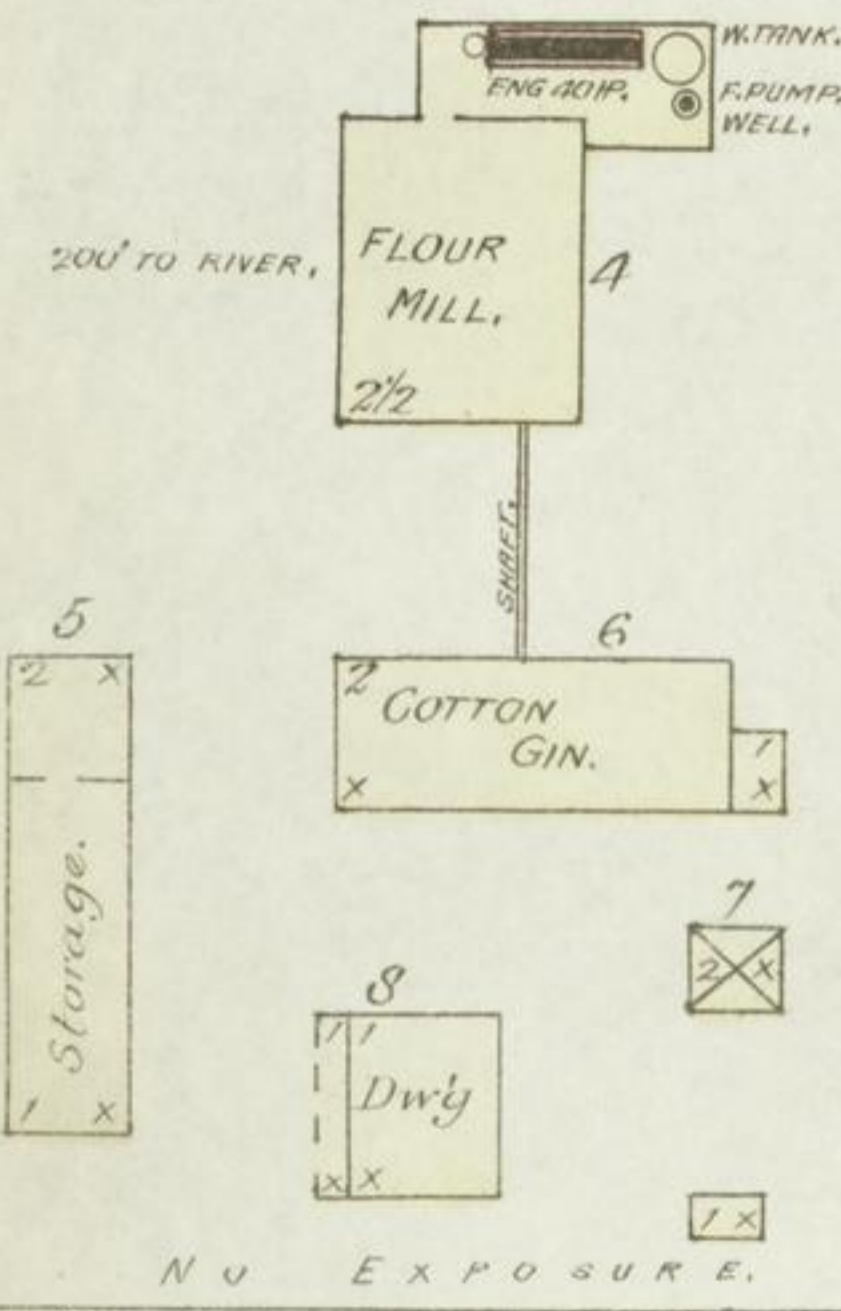


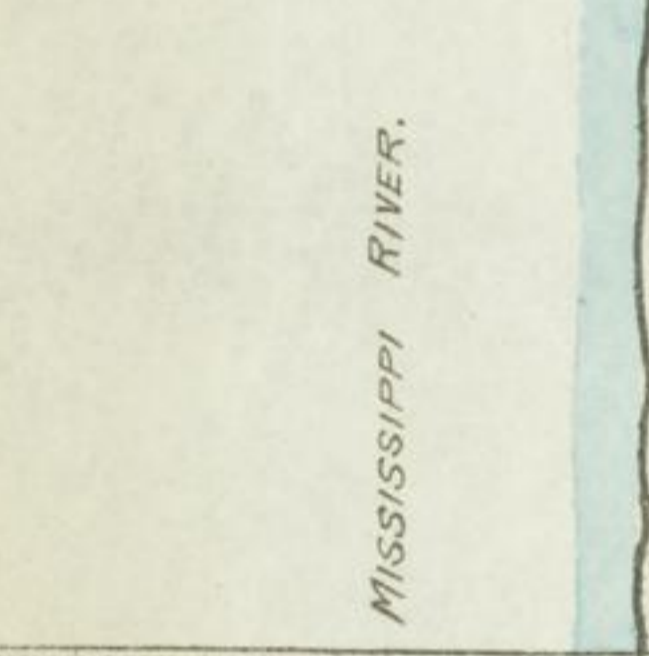
POWELL & BRO.
 1ST SKIN OF STONE, 1 PACKER
 2 BARRING BRICK-SEPARATORS
 2 SIMPSON & GAULT SHUT MACH.
 CAR. 40 BARRELS PER 24 HOURS
 100' 10" HOSE ATT. TO PUMPS
 NO LIGHTS NO HEAT, FUEL, COAL,
 NO WATCHMAN.
 COTTON GIN RUNS 2 WEEKS PER YEAR.



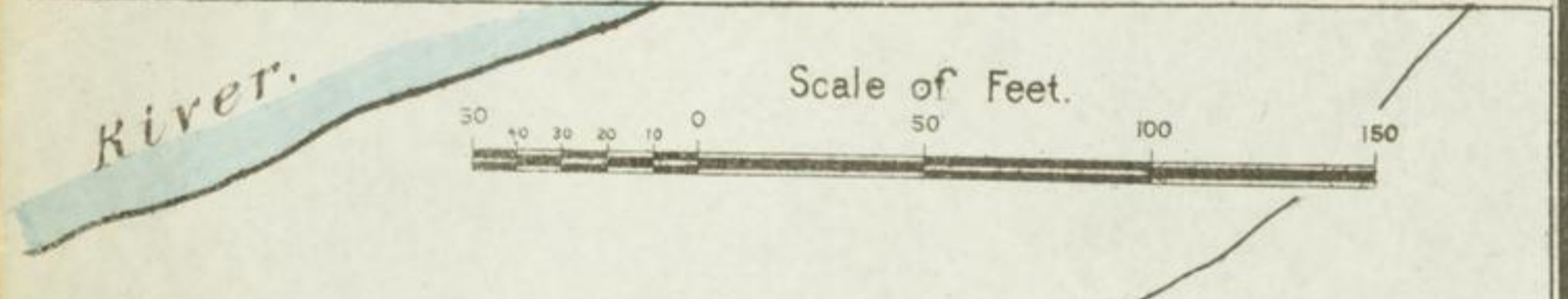
KEY
 FIRE WALL GIN AND ROOF
 FRAME PARTITION
 OPENING & IRON DOOR
 WINDOWS - SHUTTERS
 STABLE
 WINDOW IN 1ST STORY
 BLDGS COLORED YELLOW ARE FRAME
 RED - BRICK
 BLUE - STONE
 GREY - IRON
 BROWN - ADOBE
 GREEN - SPECIALS
 MARKED (S) ARE CLOTH LINED
 (S) INDICATE RELATIVE HEIGHTS
 ALTERNATE STREET NOS ARE ACTUAL
 CONSECUTIVE - ARBITRARY
 BROKEN LINE NEAR BLDG - WOOD CORNICE
 SOLID - METAL.



NO EXPOSURE.

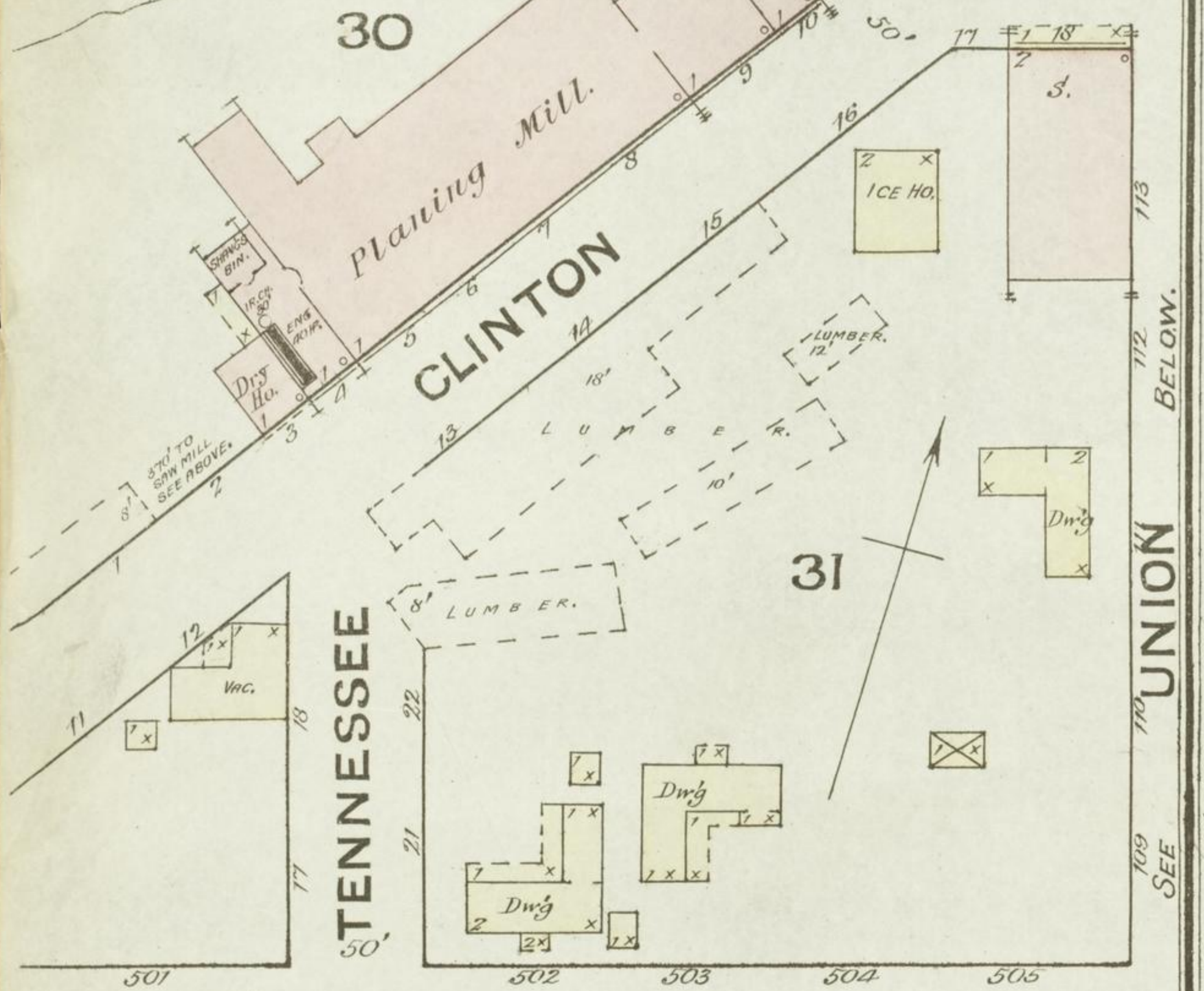


HERTWECK, BALTZER & Co.
 Wagon Ware Rm.



HICKMAN LUMBER M'FG CO.
 3 1/2" & 1" CUT OFF SAW, 2 PLANERS,
 1 PRINTING MACH, 2 RESAWS, GRINDING,
 LIGHTS-OPEN LAMPS, NO HEAT, NO ROSE,
 FUEL WOOD, NIGHT WATCHMAN,
 BLOWER TO MACHS.

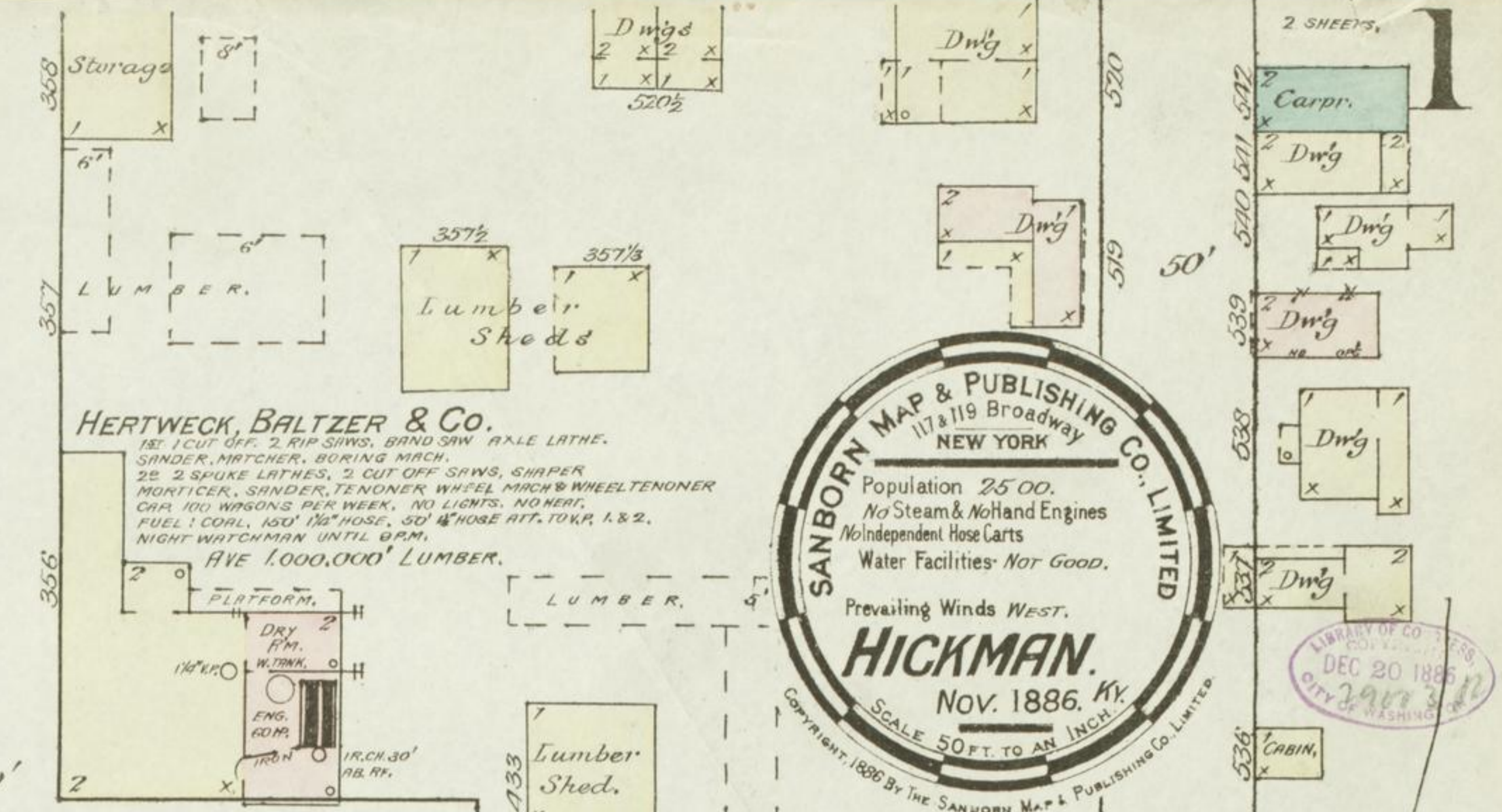
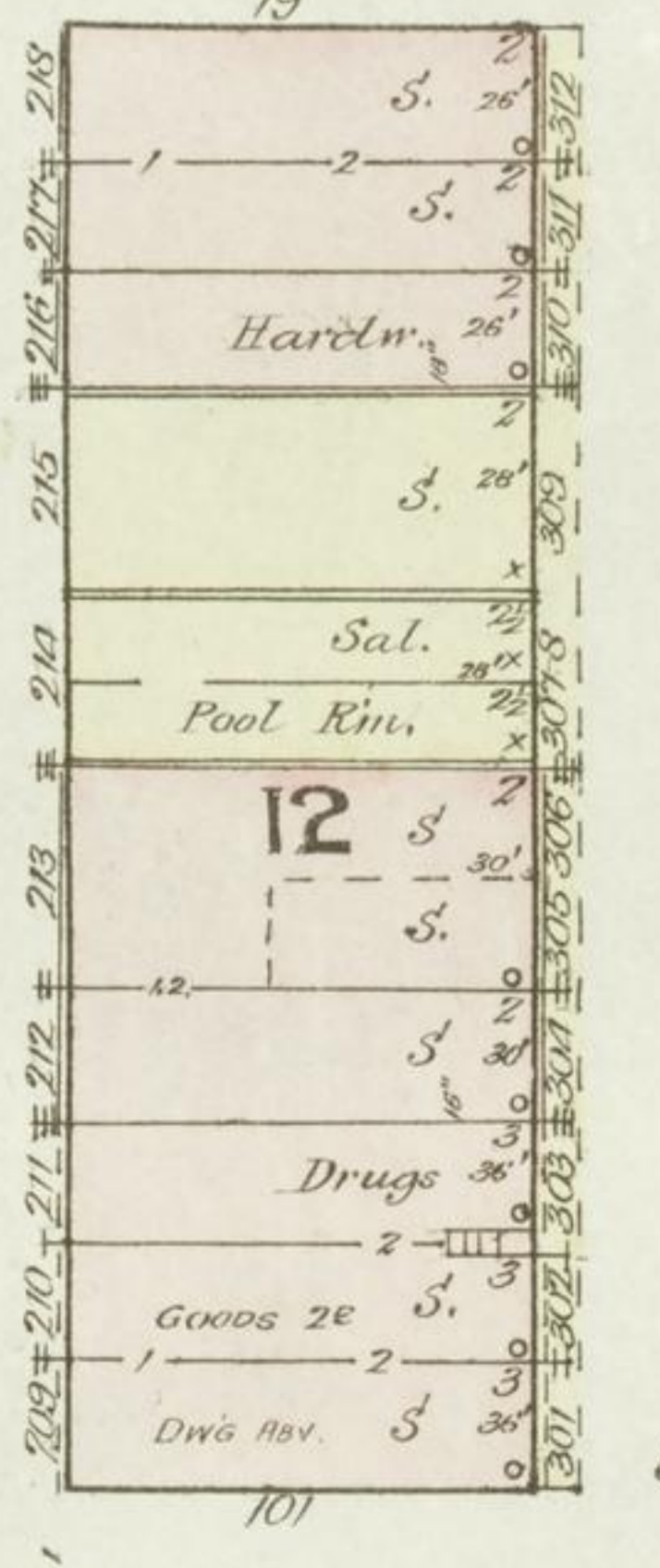
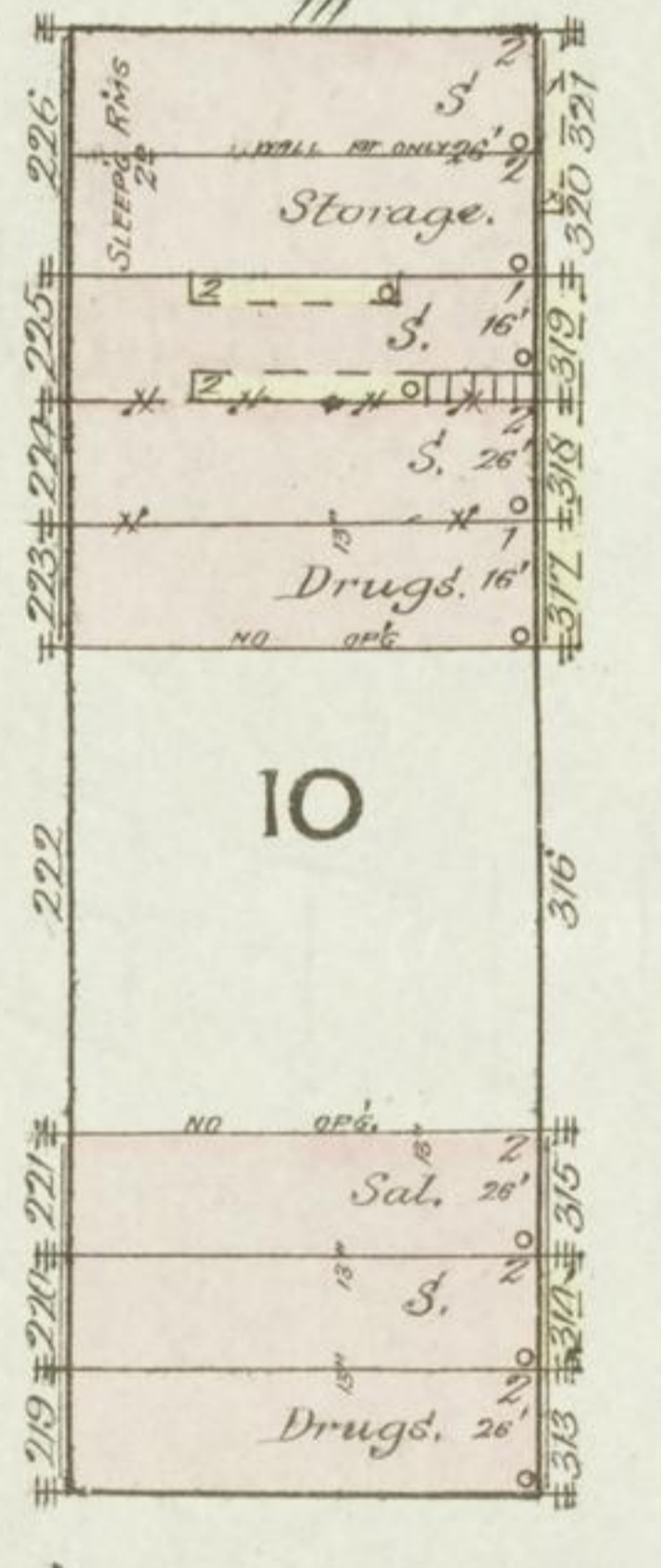
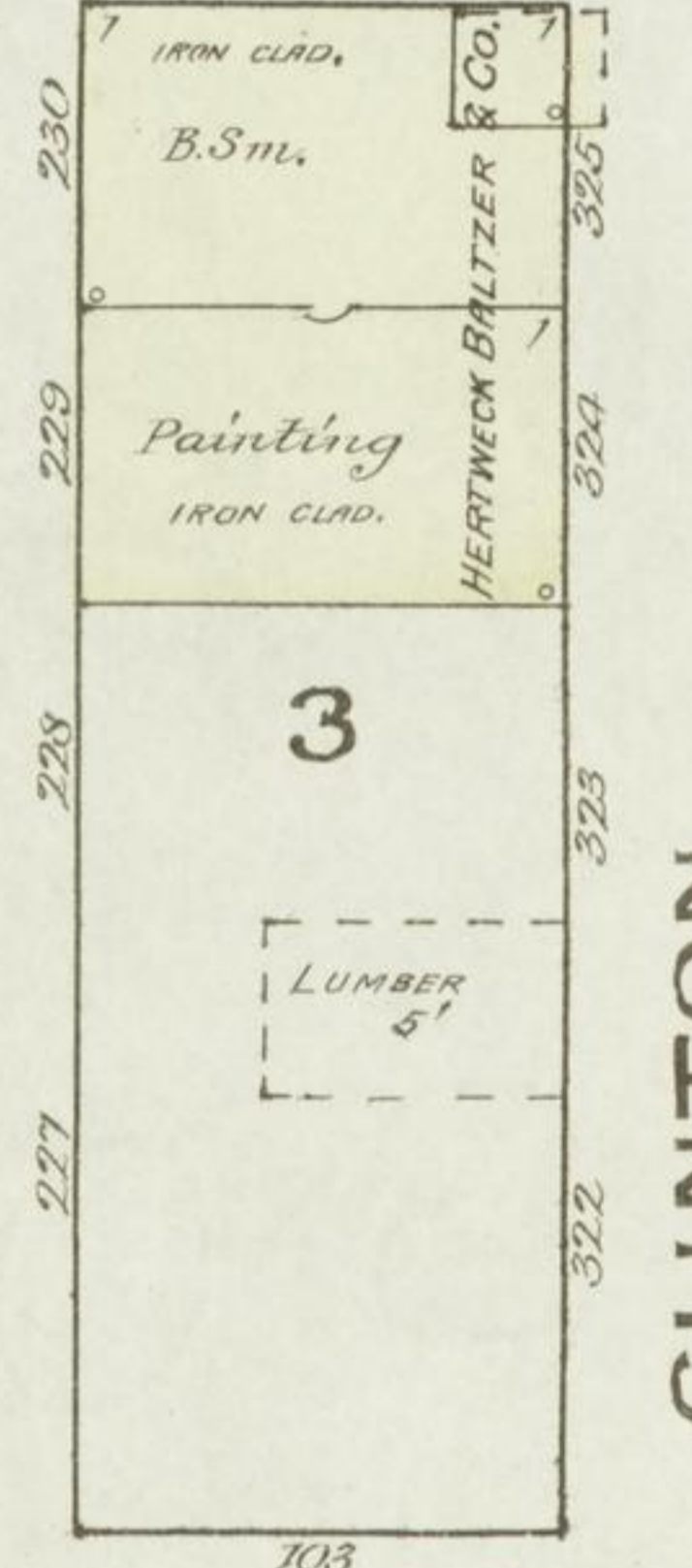
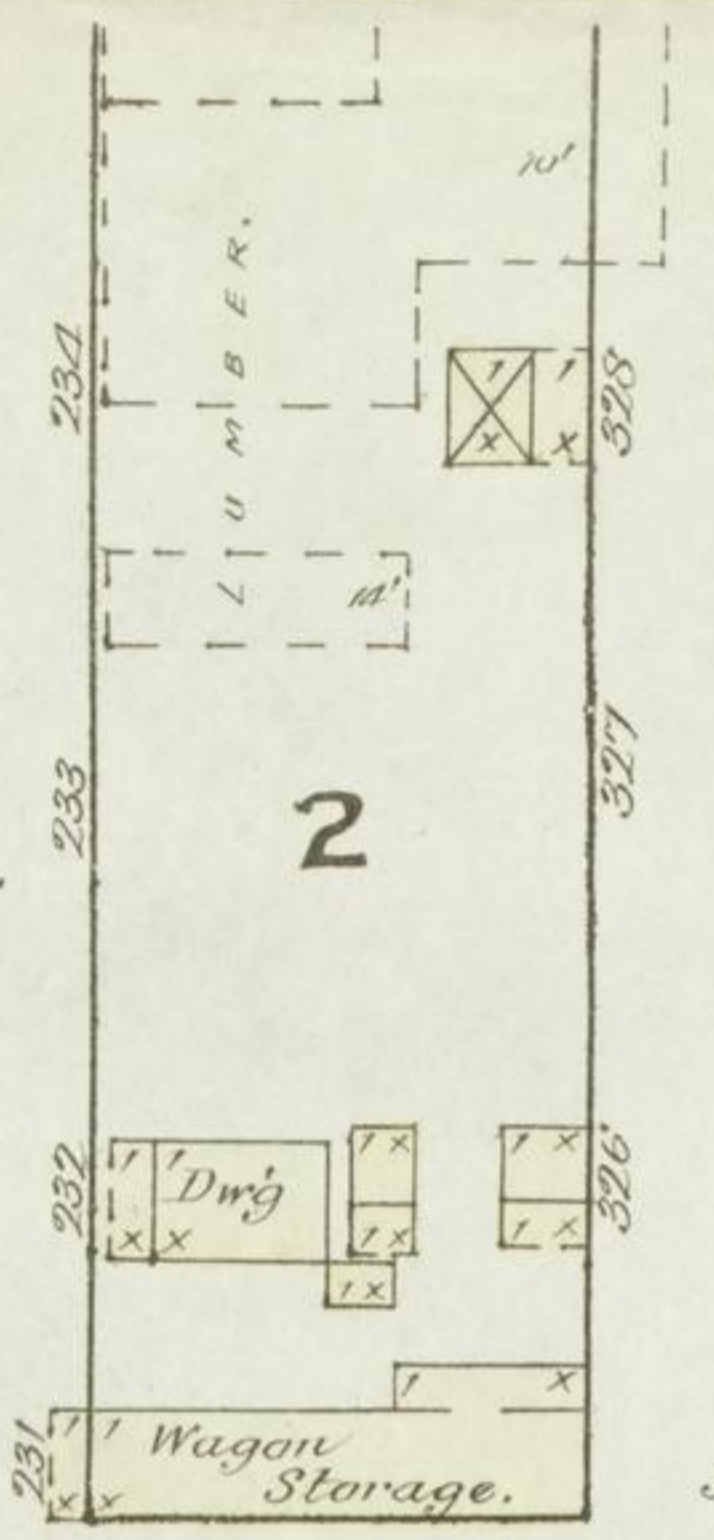
AVE. 800,000' LUMBER IN YARD.



TENNESSEE

CARROLL

UNION



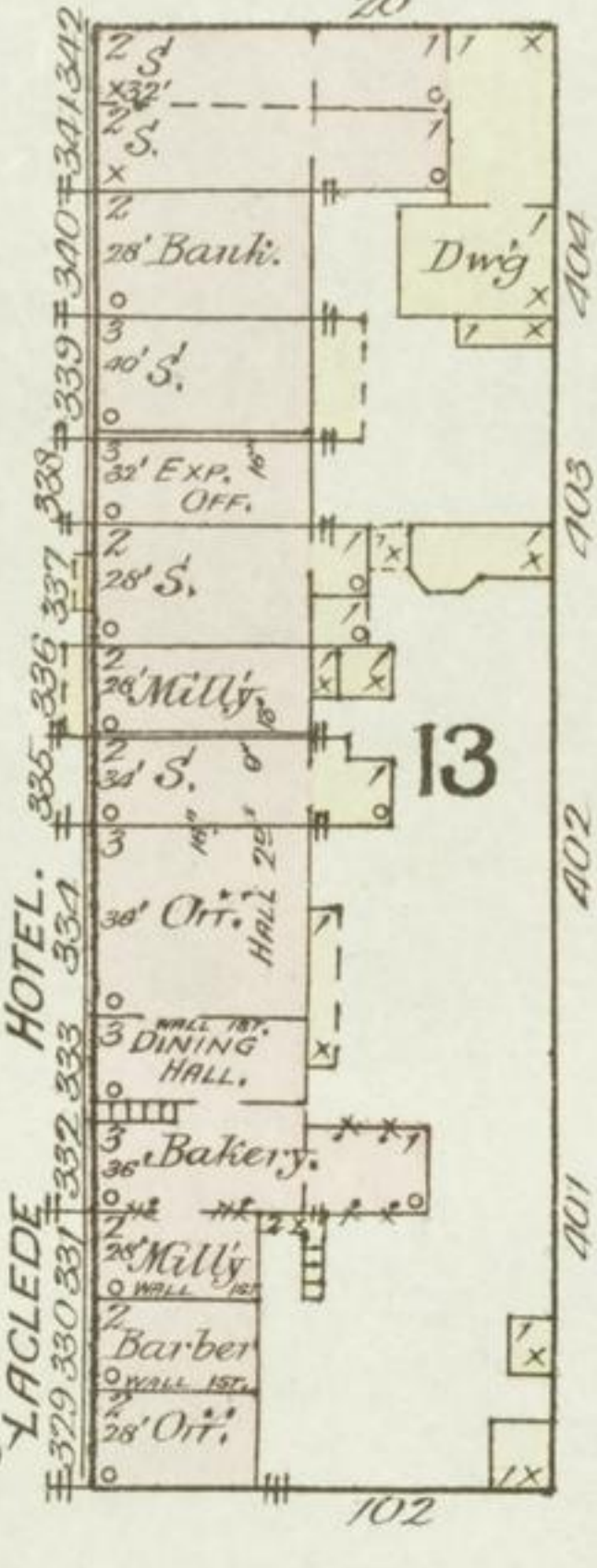
OHIO



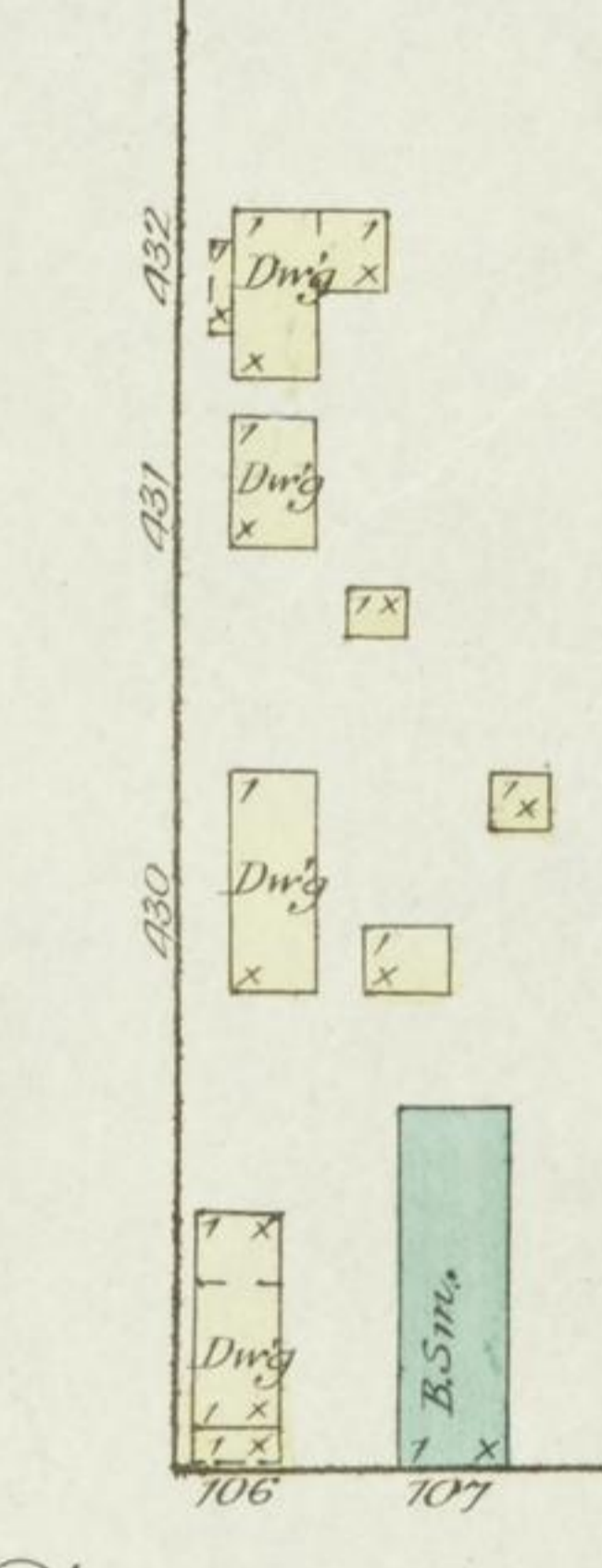
KENTUCKY



CUMBERLAND



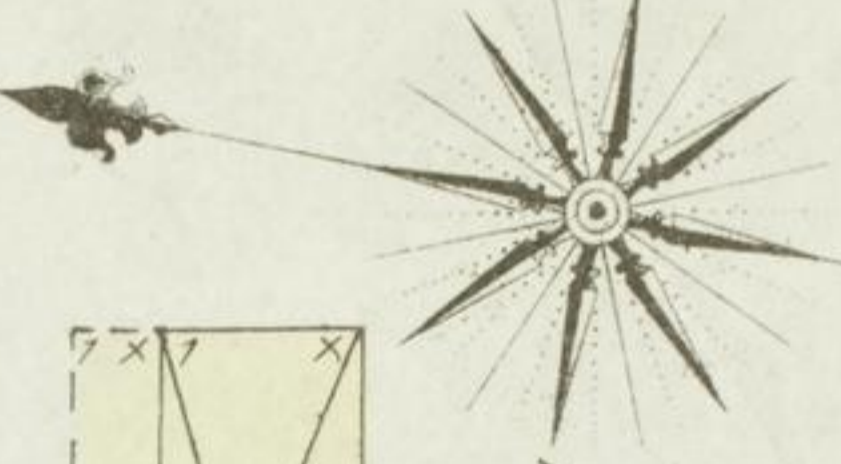
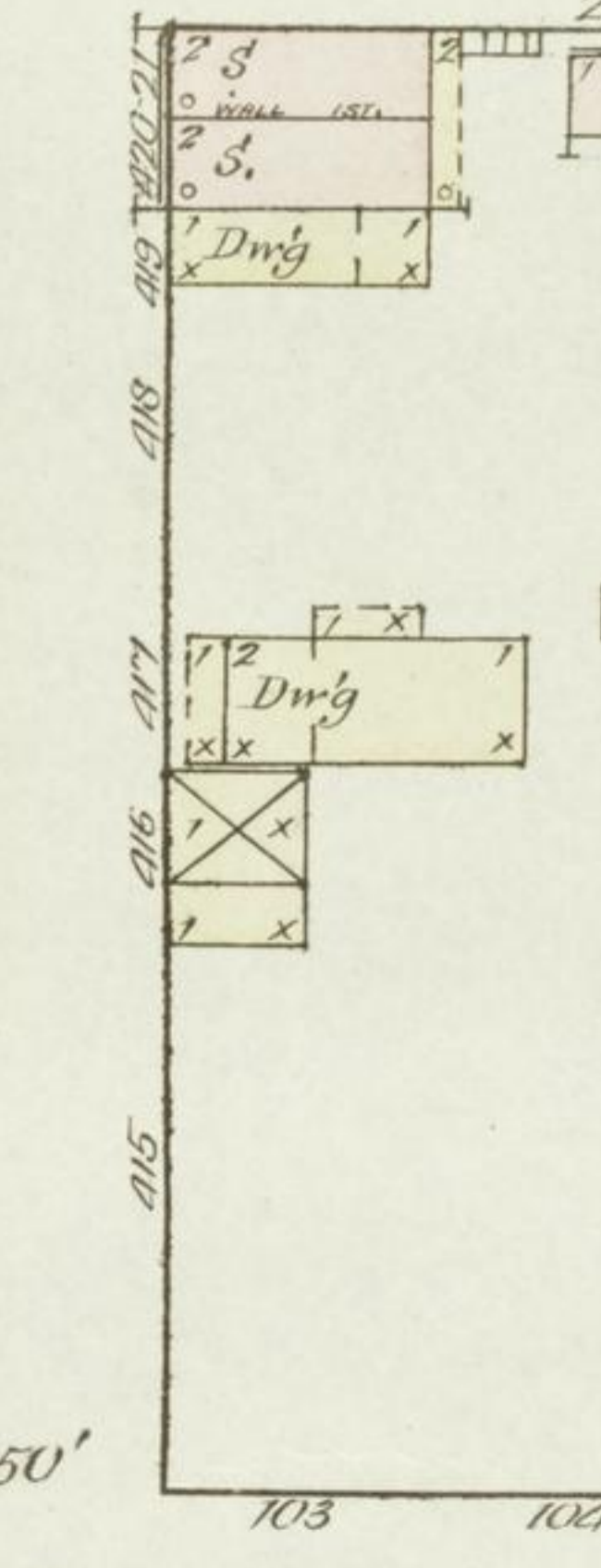
CLINTON



JACKSON



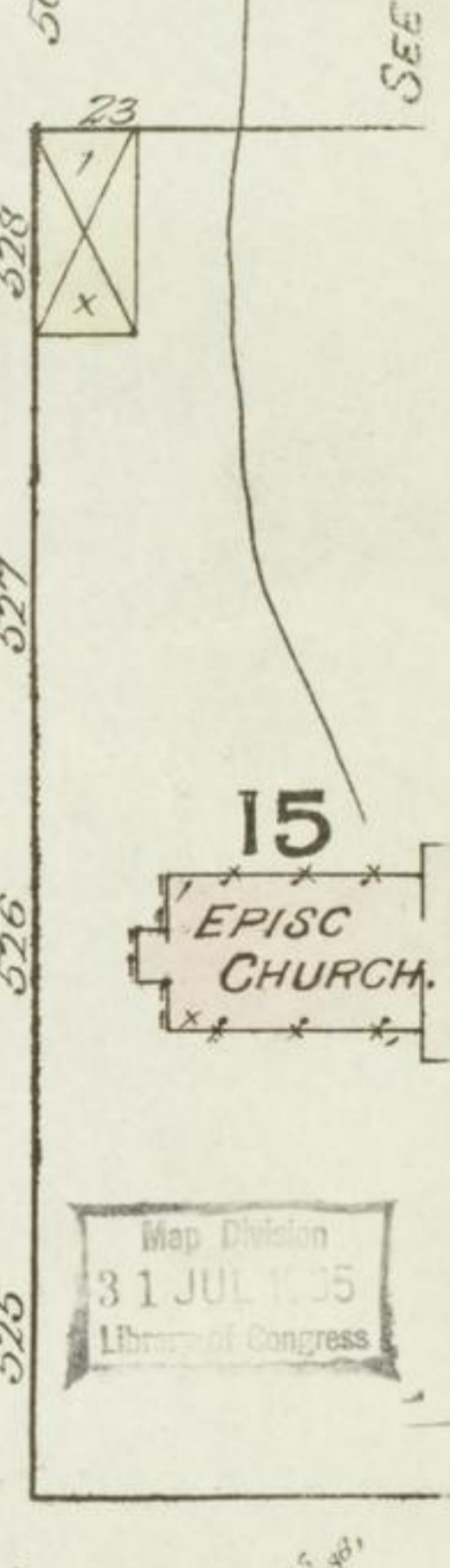
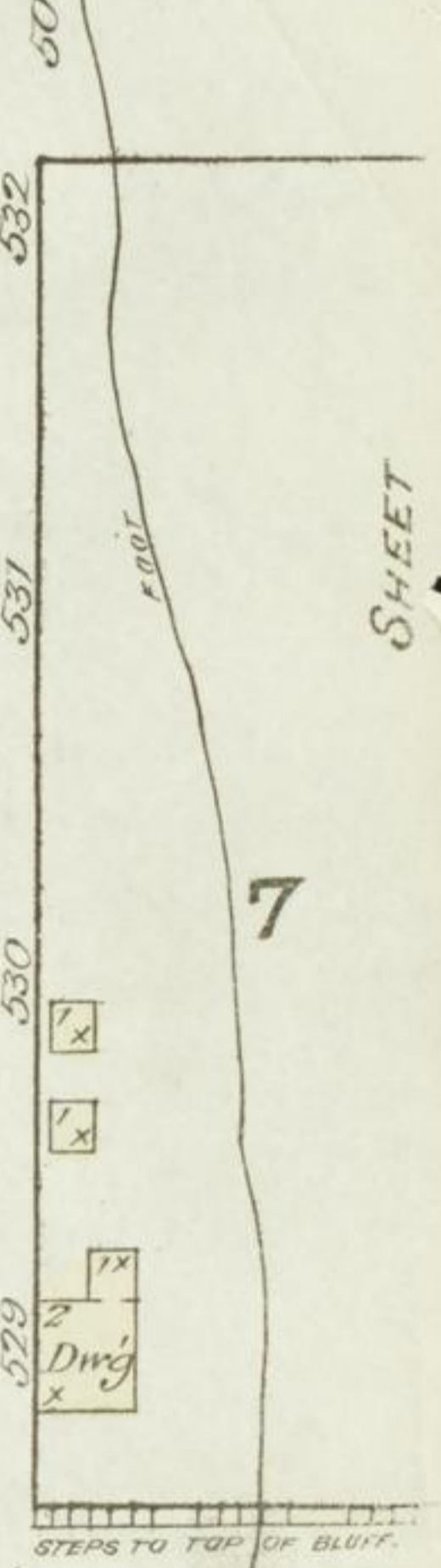
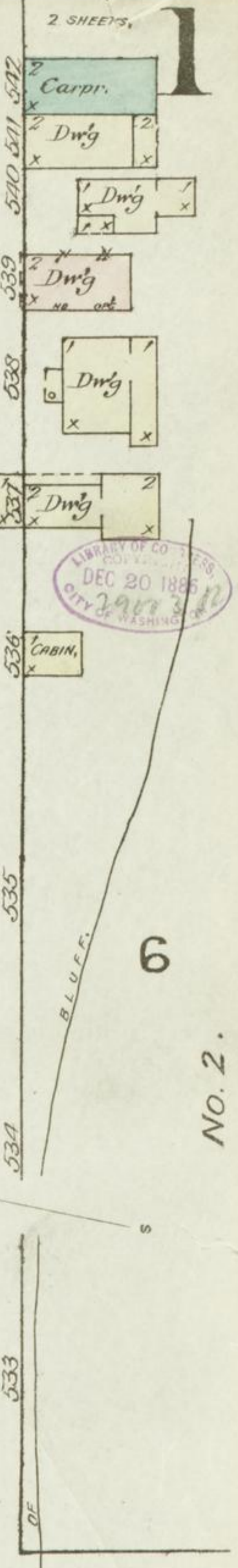
CUMBERLAND



CARROLL

CUMBERLAND

UNION



EPISC. CHURCH.

Map Division
 31 JUL 1885
 11th Annual Congress

SEE DETACHED THIS SHEET.