

# INSURANCE MAPS of Maysville

MASON CO.

## KENTUCKY

PUBLISHED BY THE

### SANBORN MAP COMPANY

11 Broadway, New York

SCALE 50 FT. TO AN INCH

### Aug. 1908

Copyright 1908, by the Sanborn Map Co.

Population 10,000. Prevailing Winds S.W.

#### WATER FACILITIES

Reservoir system of water works. Water supply from Ohio River. Two reservoirs capacity 2 1/2 million gals. Filled by Blake steam pumps of 3/4 million gals. capacity per 24 hours. 14 miles of water pipes 4" to 16" diam. laid in 1882, and at intervals since. 81 double hydrants. Average pressure 150 lbs. per sq. inch. Average daily consumption 600,000 gallons.

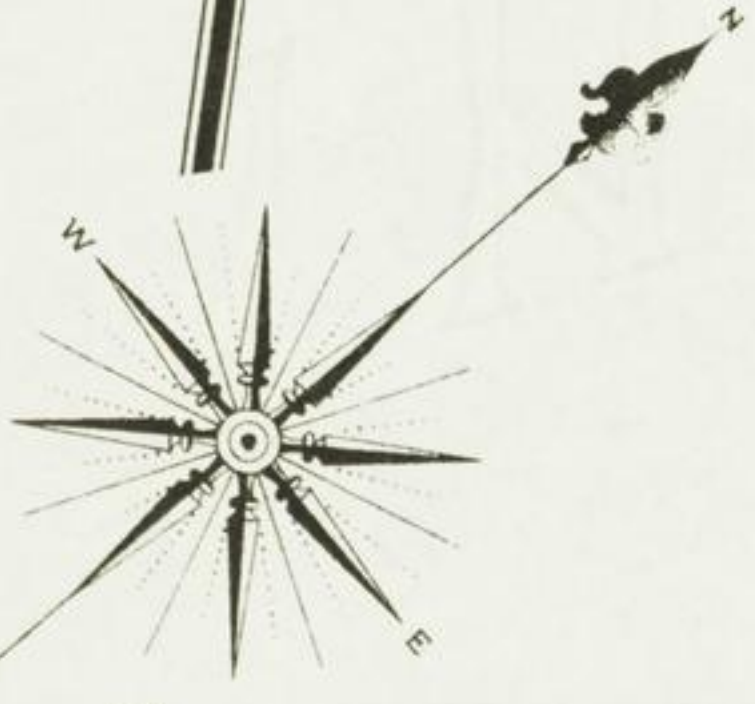
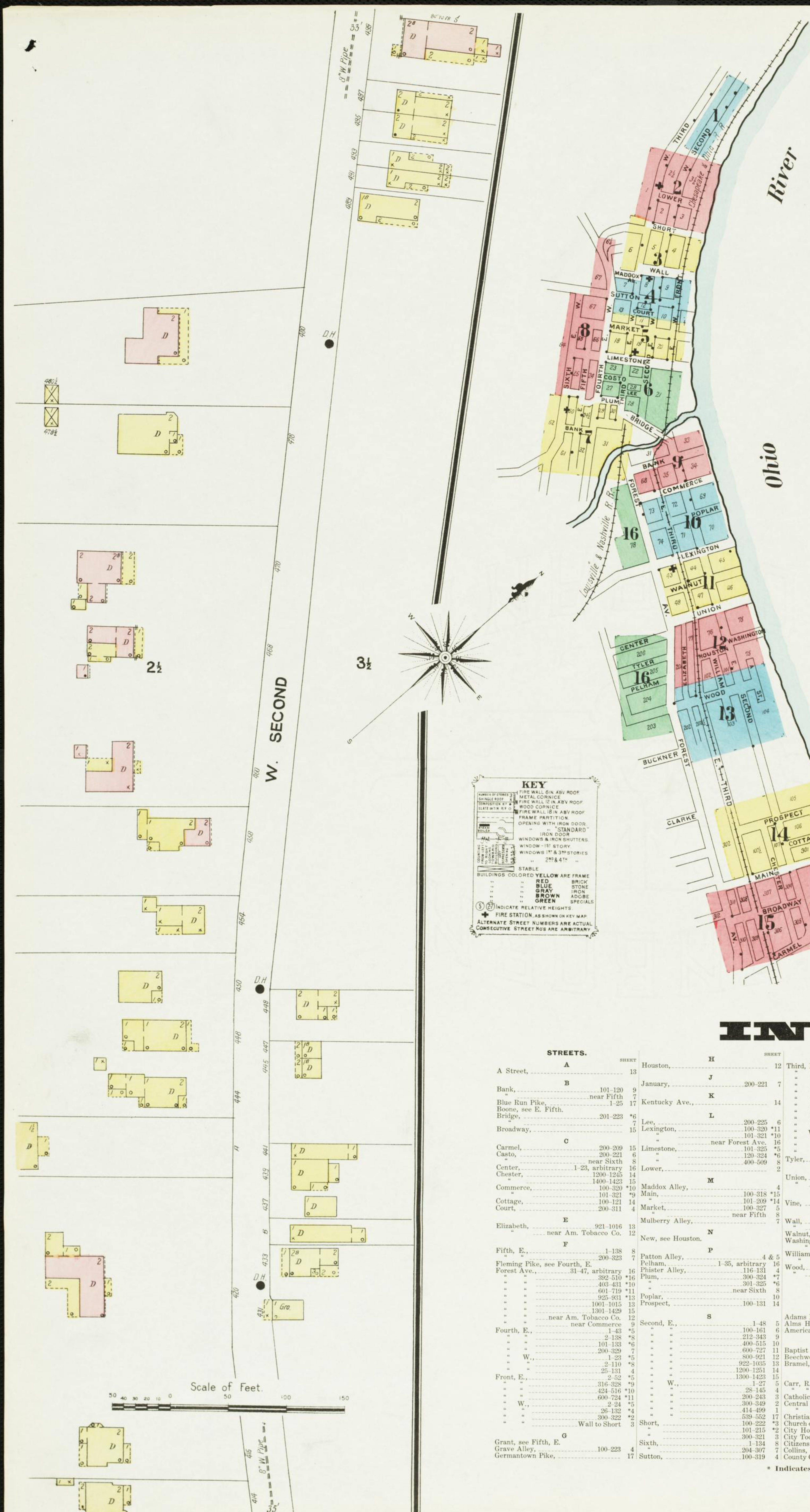
Auxiliary System - One Jordan duplex pump, capacity one million gals. and one M's Gowan duplex pump, capacity 1/2 million gals. per 24 hours.

#### FIRE DEPARTMENT

Volunteer. Six independent companies, each having own chief. Combined membership 210 men. Fire alarm by telephone and sounded by bell.

One hook & ladder truck and eleven hose reels drawn by hand. 2500 ft. rubber hose, 3300 ft. canvas hose, of which 4500 ft. is 2" and 1500 ft. is 2 1/2". Total hose at all stations 6000 ft.

Principal streets paved and Macadamized. Public lights electric.



**KEY**

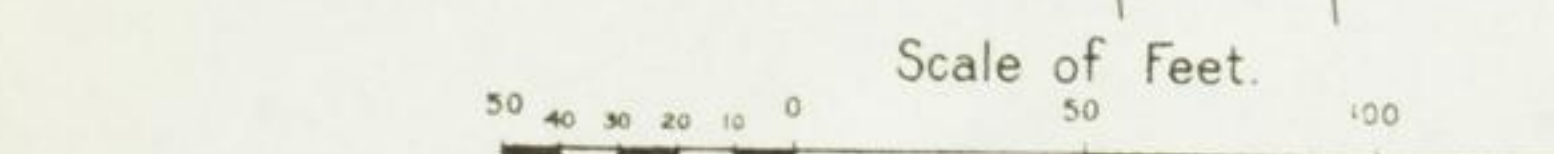
FIRE WALL ON ASB. ROOF  
 METAL CORNICE  
 FIRE WALL IN ASB. ROOF  
 WOOD CORNICE  
 FIRE WALL IN ASB. ROOF  
 SLATE WITH ASB.  
 FRAME PARTITION  
 OPENING WITH IRON DOOR  
 IRON DOOR  
 WINDOWS & IRON SHUTTERS  
 WINDOW - 1st STORY  
 WINDOWS 1st & 2nd STORIES  
 2nd & 4th

STABLE  
 BUILDINGS COLORED YELLOW ARE FRAME  
 RED BRICK  
 BLUE STONE  
 GRAY IRON  
 BROWN ADobe  
 GREEN SPECIALS

(S) INDICATE RELATIVE HEIGHTS  
 (+) FIRE STATION, AS SHOWN ON KEY MAP  
 ALTERNATE STREET NUMBERS ARE ACTUAL  
 CONSECUTIVE STREET NOS ARE ARBITRARY

## INDEX.

STREETS.	SHEET	H	SHEET	T	SHEET		
A Street.	A	13	Houston.	12	Third, E.	1-40	5
Bank.	B	101-120	January.	200-221	"	100-151	6
Blue Run Pike.		near Fifth	Kentucky Ave.	14	"	200-220	7
Boone, see E. Fifth.		1-25	Lee.	200-225	"	323-334	9
Bridge.		201-223	Lexington.	100-320	"	400-511	10
Broadway.			Lower.	101-321	"	600-711	11
Carmel.	C	200-209	Limestone.	100-324	"	800-917	12
Casto.		200-221	Maddox Alley.	101-325	"	918-1019	13
Center.		near Sixth	Main.	100-318	"	1210-1235	14
Chester.		1-23, arbitrary	Market.	100-327	"	1300-1425	15
Chester.		1200-1245	Mulberry Alley.	400-509	"	1-19	5
Commerce.		100-320	New, see Houston.		"	200-253	3
Cottage.		100-121	Patton Alley.	4 & 5	"	300-415	2
Court.		200-311	Pelham.	116-131	"	1-19	5
Elizabeth.	E	921-1016	Phister Alley.	300-324	"	200-253	3
Fifth, E.	F	1-138	Plum.	301-325	"	300-415	2
Fleming Pike, see Fourth, E.		200-323	Prospect.	100-131	"	1-19	5
Forest Ave.		31-47, arbitrary	Second, E.	1-48	"	100-324	12
"		382-510	"	100-161	"	100-325	11
"		405-431	"	212-343	"	100-325	11
"		601-719	"	400-515	"	600-727	11
"		925-931	"	690-727	"	800-921	12
"		1001-1015	"	922-1035	"	922-1035	13
"		1301-1429	"	1200-1251	"	1200-1251	14
"		near Am. Tobacco Co.	"	1300-1423	"	1300-1423	15
near Commerce		9	"	28-145	"	28-145	4
Fourth, E.		1-43	"	200-243	"	200-243	3
"		2-138	"	300-349	"	300-349	2
"		101-133	"	414-499	"	414-499	1
"		200-329	"	539-552	"	539-552	17
"		2-110	"	100-222	"	100-222	3
"		25-131	"	101-215	"	101-215	2
"		2-52	"	204-307	"	204-307	7
"		316-328	"	100-319	"	100-319	4
"		424-516	"				
"		600-724	"				
"		2-24	"				
"		25-132	"				
"		300-322	"				
"		Wall to Short	"				
Grant, see Fifth, E.							
Grave Alley.		100-223					
Germantown Pike.		17					



\* Indicates only one side of Street shown.