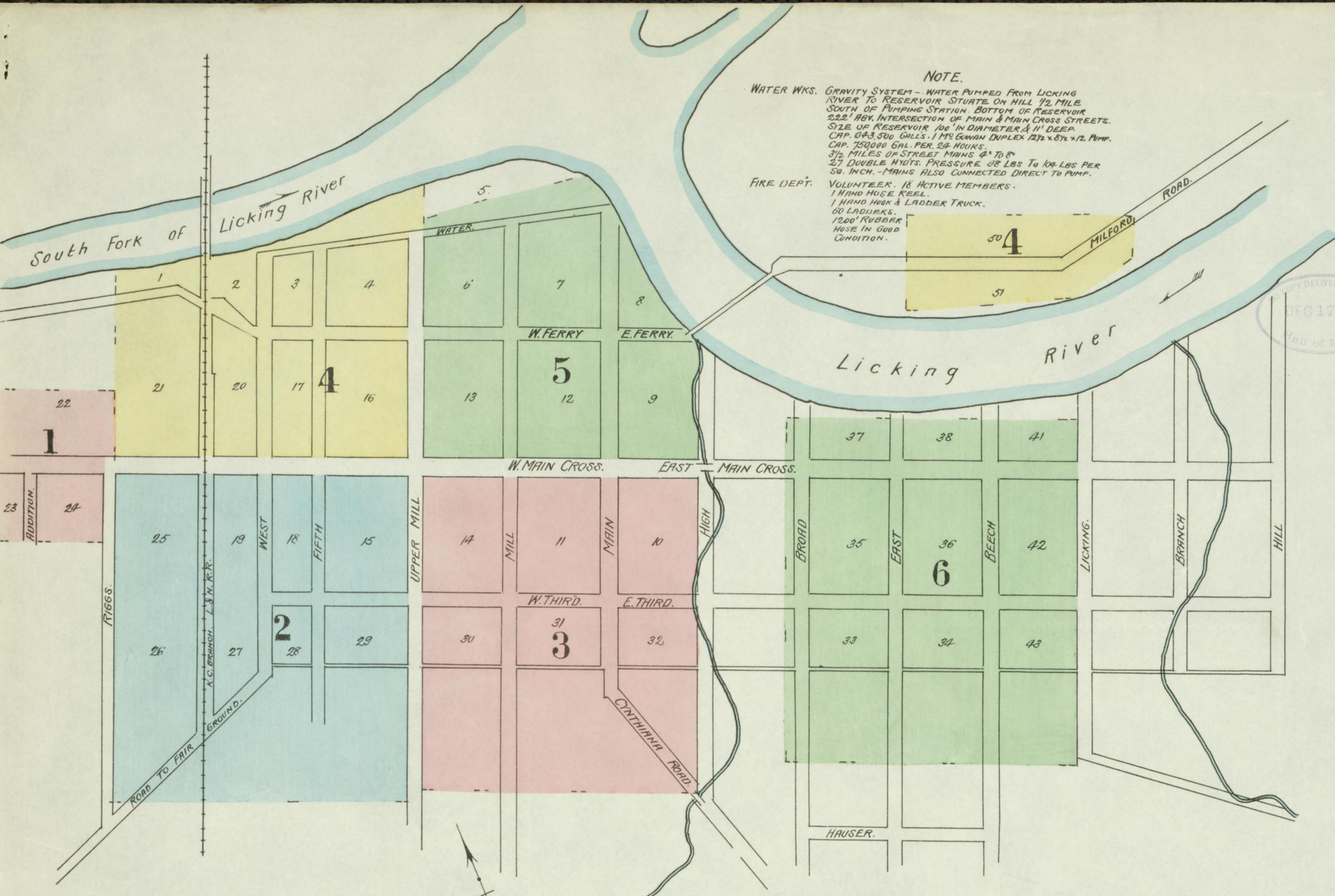




NOTE.
WATER WKS. GRAVITY SYSTEM - WATER PUMPED FROM LICKING RIVER TO RESERVOIR SITUATE ON HILL 1/2 MILE SOUTH OF FERRY STATION. BOTTOM OF RESERVOIR 222' ASX INTERSECTION OF MAIN & MAIN CROSS STREETS. SIZE OF RESERVOIR 100' IN DIAMETER & 11' DEEP. CAP. 643,500 GALS. 1 1/2 INCH DIOLED 2 1/2 x 5 1/2 INCH. CAP. 750,000 GALS. PER 24 HOURS.
3/4 MILES OF STREET MAINS & 7 1/2 INCH 2 1/2 DOUBLE INCHTS. PRESSURE 100 LBS TO 100 LBS PER SQ. INCH. MAINS ALSO CONNECTED DIRECT TO PUMP.
FIRE DEPT. VOLUNTEER. 18 ACTIVE MEMBERS.
1 HAND HOSE REEL.
1 HORN, HOOK & LADDER TRUCK.
60 LADDEREES.
1200' RUBBER HOSE IN GOOD CONDITION.



45179031
INDEX.
45179

STREETS.

Street	Sheet
Addition, A	1
Beech, B	6
Broad, B	6
Dudley, D	1
East, E	6
Fair Grounds Road, F	2
Ferry, B, F	5
" W, F	1-70
Bradford, T, Tobacco Warehouse, B	1
Browning, O, N., & Co., Tob. W. H., B	2
Fifth, B	1-66
" B	100-165
High, H	3 & 5
Licking, L	6
Main, M	1-78
" Cross, E, M	80-155
" " " M	1-25
" " " M	2-18
" " " M	1701-1720, arbitrary
" " W, M	1-69
" " " M	2-74
" " " M	76-170
" " " M	77-171
" " " M	172-255
Milford Pike, M	4
Mill, M	1-66
" M	70-155
Railroad, arbitrary, R	1-84
" " " R	85-170
Riggs, R	1 & 2
Short, S	5
Third, E, T	1-26
" " W, T	1601-1624, arbitrary
" " " T	1-68
" " " T	70-135
Upper Mill, U	1-67
" " U	2-68
" " " U	90-160
" " " U	91-161
Water, W	1-76
" " " W	79-120

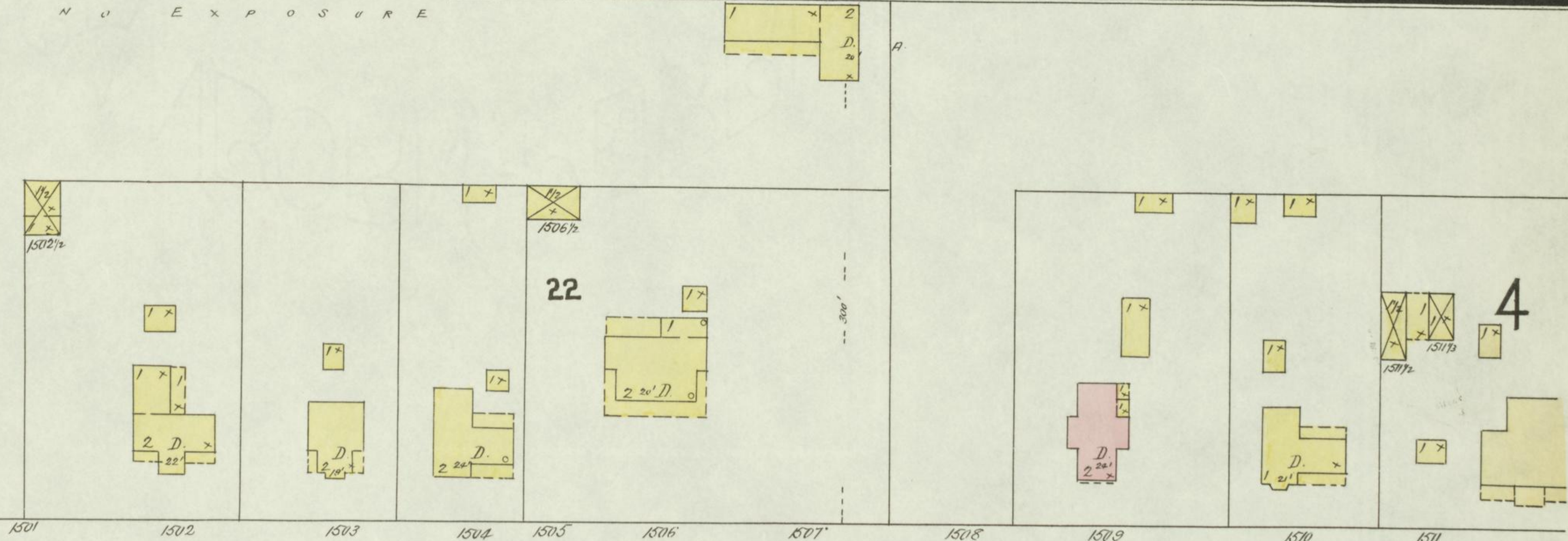
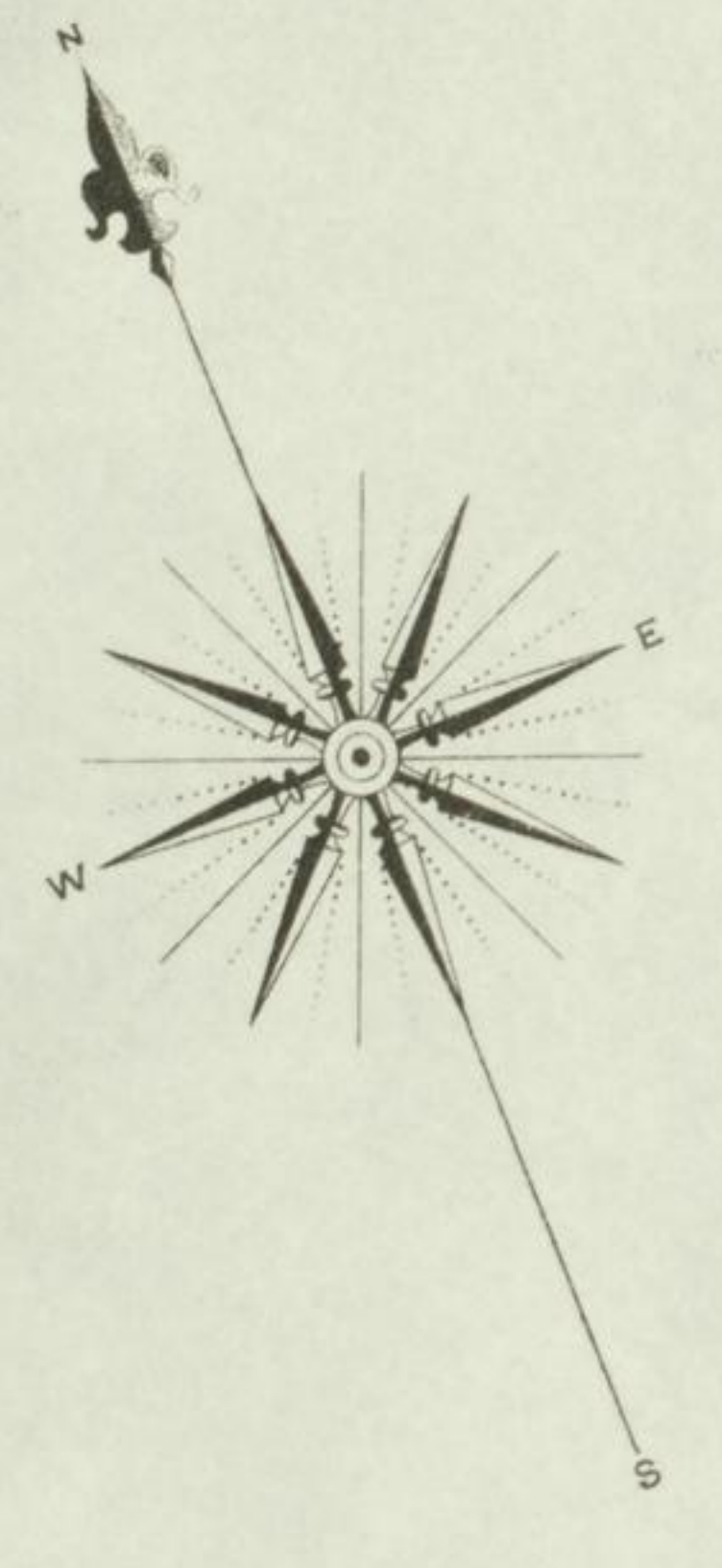
SPECIALS.

Special	Sheet
African M. E. Church, A	6
Applegate, W., & Bro., Storage, A	5
Assembly Building, A	5
B, B	
Blade, J. E., Tobacco Warehouse, B	2
Bodman Hotel, B	2
Bradford, T., Tobacco Warehouse, B	1
Browning, O. N., & Co., Tob. W. H., B	2
Bullock, H., Tobacco Warehouse, B	2
C, C	
Chipman, N. B., Distillery, C	4
Christian Church, C	2
Colored Baptist Church, C	6
" M. E. Church, C	4
County Court House & Jail, C	5
F, F	
Falmouth Guide Printing, F	4
" Seminary, F	3
" Woolen Factory, F	5
First Baptist Church, F	3
" Presbyterian Church, F	3
G, G	
Galloway, J. W., Mill & Elevator, G	4
Guide Printing, G	4
H, H	
Hagemeyer, C. C., Mills & Elevator, H	2
L, L	
Lightfoot Hotel, L	5
L. & N. R. R. Depot, L	2
M, M	
McDonald, R. B., Warehouse, M	5
Masonic Building, M	5
Meth. Episc. Chapel, M	5
P, P	
Phoenix Hotel, P	3
Public School, P	6
S, S	
St. Paul's Luth. Church, S	5
" Xavier's Cath. Church, S	5
Shoemaker, T. M., & Co., Saw & Planning Mill, S	4
" " " S	4
Stilwell, M. E., Wagon Shop, S	1
W, W	
Weller, J., & Co., Pickle Factory, W	4
Woodhead, J., Woolen Mill, &c., W	5

KEY

3 1/4" FIRE WALL 6 1/2" AB. ROOF
2 1/2" 12"
18"
FRAME PARTITION
STEAM BOILER
OPENING & IRON DOOR
WINDOWS - SHUTTERS
STABLE
WINDOW IN 1ST STORY
1" 1" 3"
2" 4"
B'LDGS COLORED YELLOW ARE FRAME
RED BRICK
BLUE STONE
GREY IRON
BROWN ADOBE
GREEN SPECIALS
MARKED (D) ARE CLOTH LINED
(S) INDICATE RELATIVE HEIGHTS
ALTERNATE STREET NOS ARE ACTUAL
CONSECUTIVE - ARBITRARY
BROKEN LINE NEAR B'LDG - WOOD CORNICE
SOLID - METAL

N O E X P O S U R E



W. MAIN CROSS

