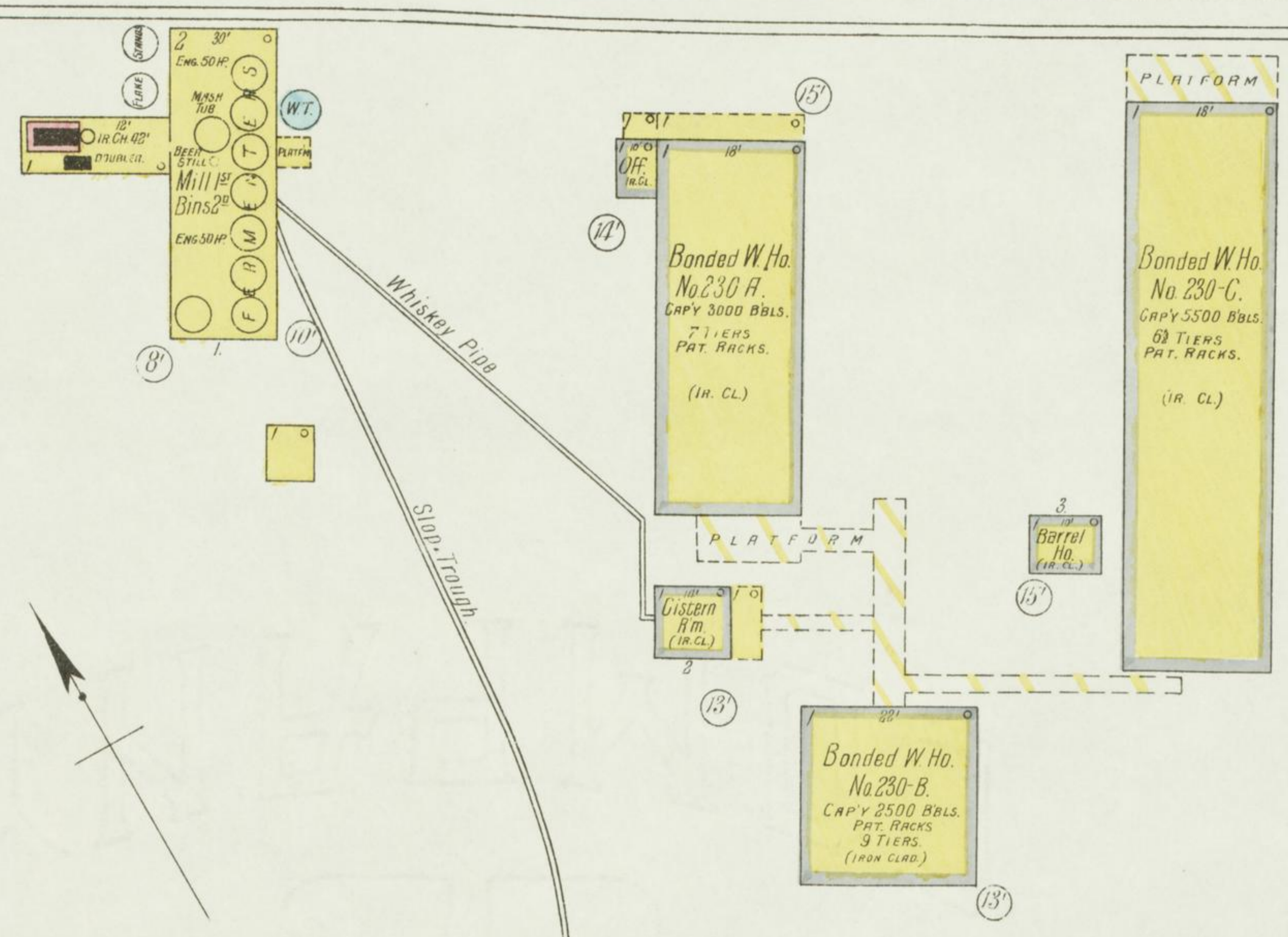
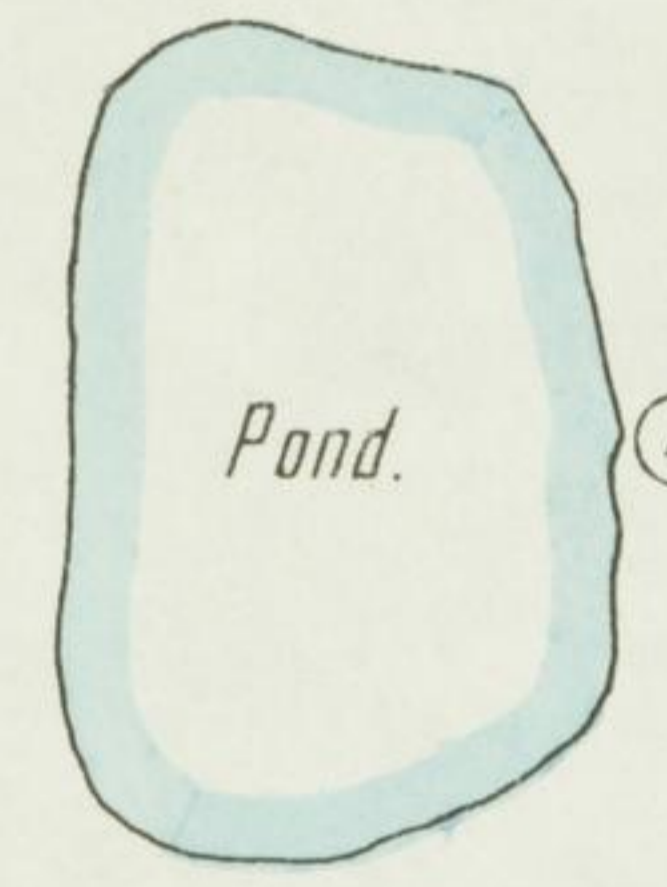


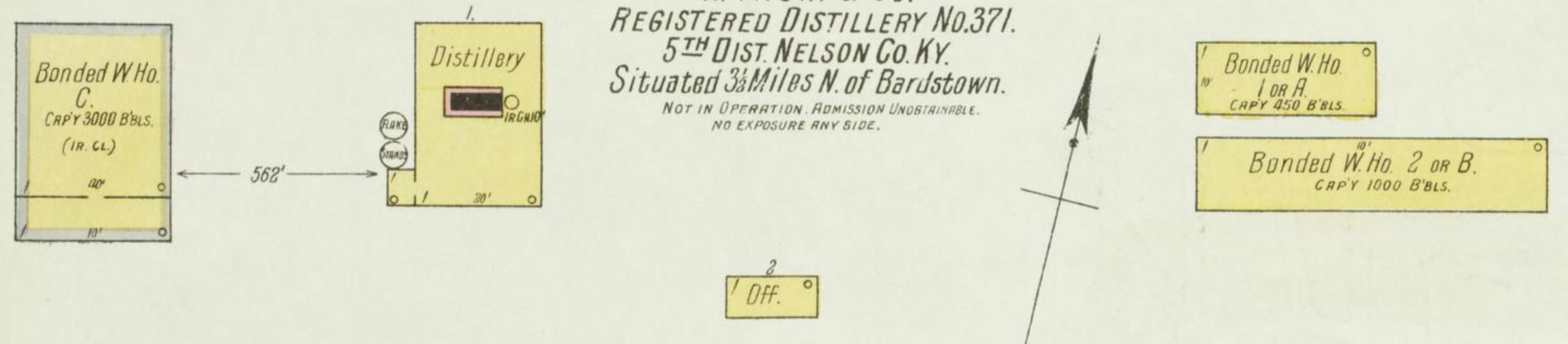
OCT. 1905  
**BARDSTOWN**  
KY.

Louisville & Nashville R.R. (Springfield Branch)

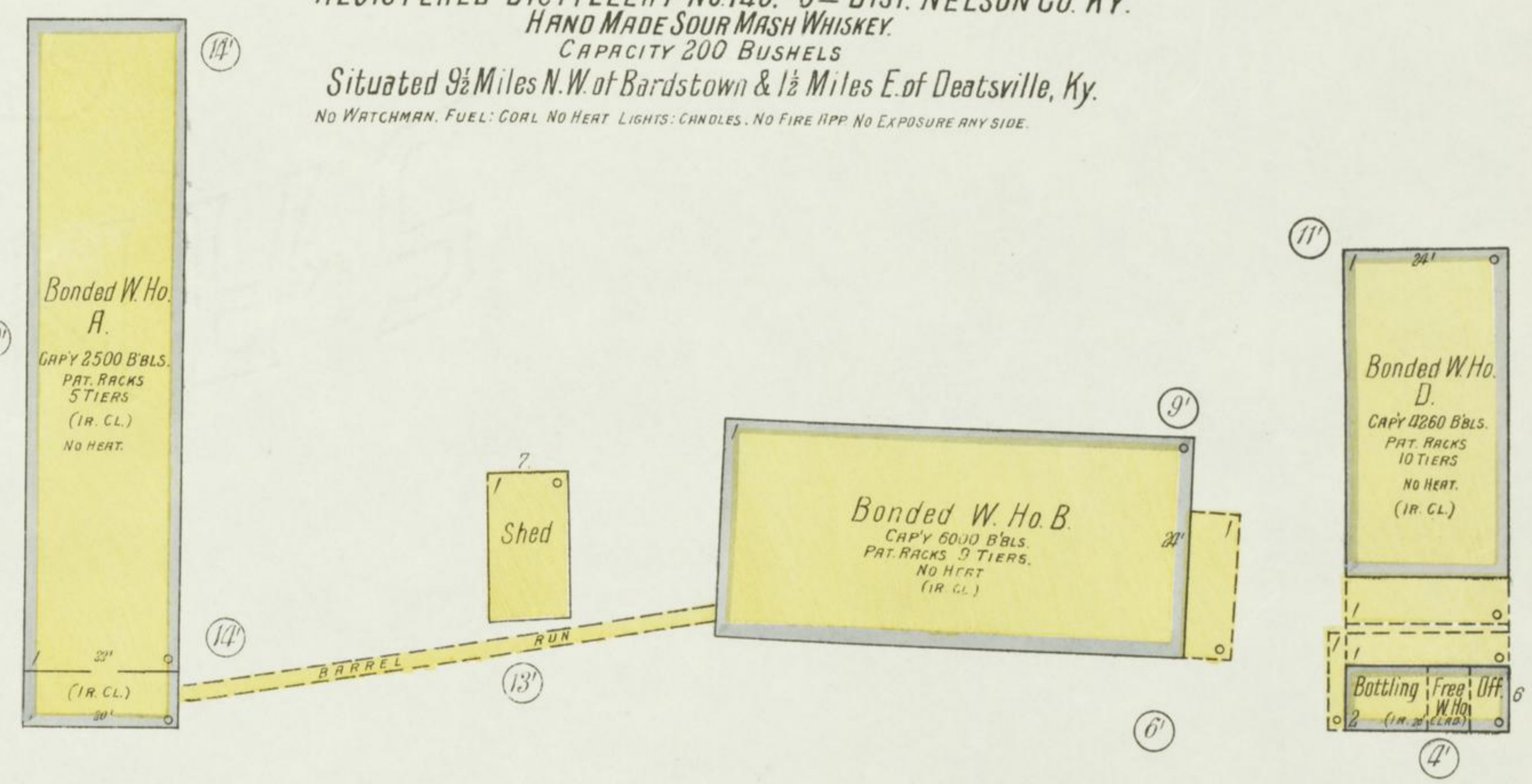
**Clear Spring Distillery Co.**  
REGISTERED DISTILLERY No. 230.  
5<sup>th</sup> DIST. NELSON CO. KY.  
HAND MADE SOUR MASH WHISKEY.  
CAPACITY 300 BUSHELS.  
SITUATED 3 MILES N. OF BARDSTOWN.  
NO WATCHMAN. FUEL: COAL. NO LIGHTS. NO HEAT. BBL'S & BUCKETS THRU OUT. NO EXPOSURE ANY SIDE.



**N. M. URI & Co.**  
REGISTERED DISTILLERY No. 371.  
5<sup>th</sup> DIST. NELSON CO. KY.  
SITUATED 3 MILES N. OF BARDSTOWN.  
NOT IN OPERATION. ADMISSION UNSUBSTANTIATED. NO EXPOSURE ANY SIDE.

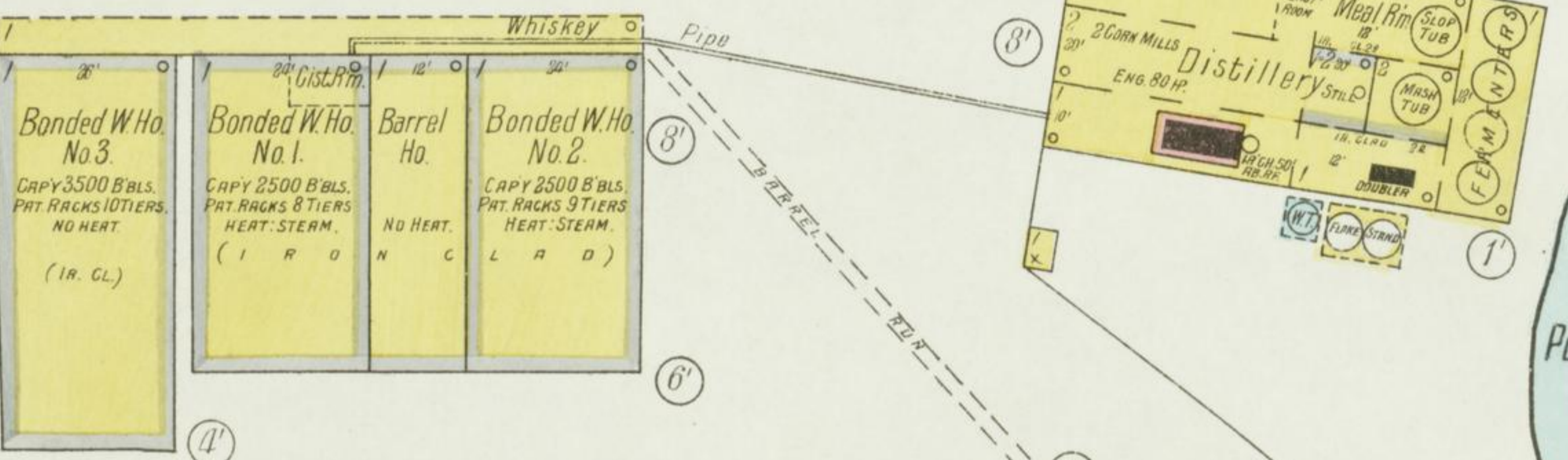


**LESLIE B. SAMUELS as T. W. SAMUELS.**  
REGISTERED DISTILLERY No. 105. 5<sup>th</sup> DIST. NELSON CO. KY.  
HAND MADE SOUR MASH WHISKEY.  
CAPACITY 200 BUSHELS.  
SITUATED 9 1/2 MILES N. W. OF BARDSTOWN & 1 1/2 MILES E. OF DEATSWILE, KY.  
NO WATCHMAN. FUEL: COAL. NO HEAT. LIGHTS: CANDLES. NO FIRE APP. NO EXPOSURE ANY SIDE.

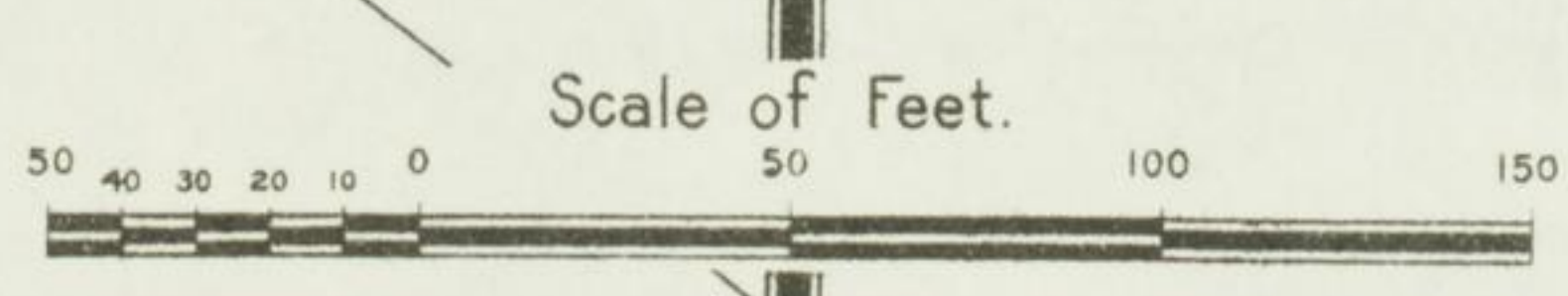


**SHERMAN HOTEL**

L. & N. R. R. Springfield Branch



**W. B. SAMUELS & Co. Inc.**  
REGISTERED DISTILLERY No. 241.  
5<sup>th</sup> DIST. NELSON CO. KY.  
HAND MADE SOUR MASH WHISKEY.  
CAPACITY 101 BUSHELS.  
SITUATED AT SAMUELS P.O. 6 1/2 MILES N. W. OF BARDSTOWN.  
NO WATCHMAN. FUEL: COAL. LIGHTS: HERSENE LANTERNS. HEAT: STEAM IN W. HO'S. HAS 1 & 2 STOVE IN YEAST RM OF DISTILLERY. BBL'S & BUCKETS DISTRIBUTED. NO EXPOSURE ANY SIDE.



Mag. Division  
31 JUL 1905  
Library of Congress

A.H.E. STILES