

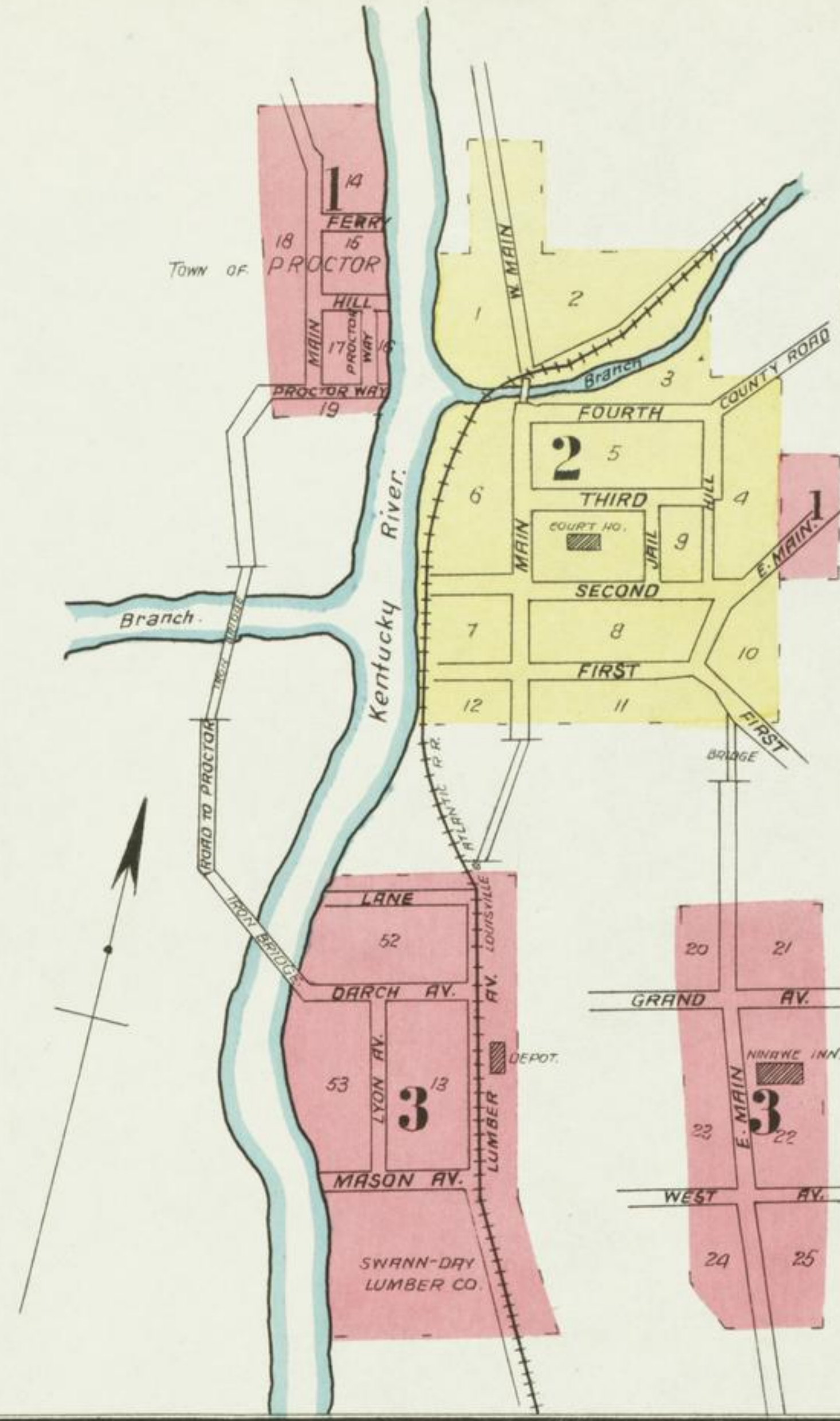


LIBRARY OF CONGRESS
Two Copies Received
MAR 5 1908
AUG 25 1908
CLASS E
172-5544

WATER FACILITIES: River and private wells.
FIRE DEPT: Volunteer bucket brigade.
No fire apparatus.

INDEX

STREETS.		SPECIALS			
NO.	SHEET	NO.	SHEET	NO.	SHEET
County Road	2	Main	1, 2	Christian Church	2
Crow Lane	3	" E.	1, 2, 3	Clark Boarding House	2
		" W.	3	County Court House & Jail	2
Darch Ave.	3	Mason Ave.	3		
Ferry	1, 2	Mine Road	1		
First	1, 2				
Fourth	2	Proctor Way	1	L. & A. R. R. Depot	3
Grand Ave.	3	Second	2	Ninaweb Inn	3
Hill	1, 2	Third	2	Presbyterian Church	3
Jail	2	West Ave.	3	Public Schools	1, 2
Lumber Ave.	3			Richardson Coal Co.	1
Lyon Ave.	3	Baptist Church	3	Roberts Hotel	2
		Beach Hotel	2		
				Skating Rink	3
				St. Thomas Episcopal Church	1
				Swann-Day Lumber Co.	3



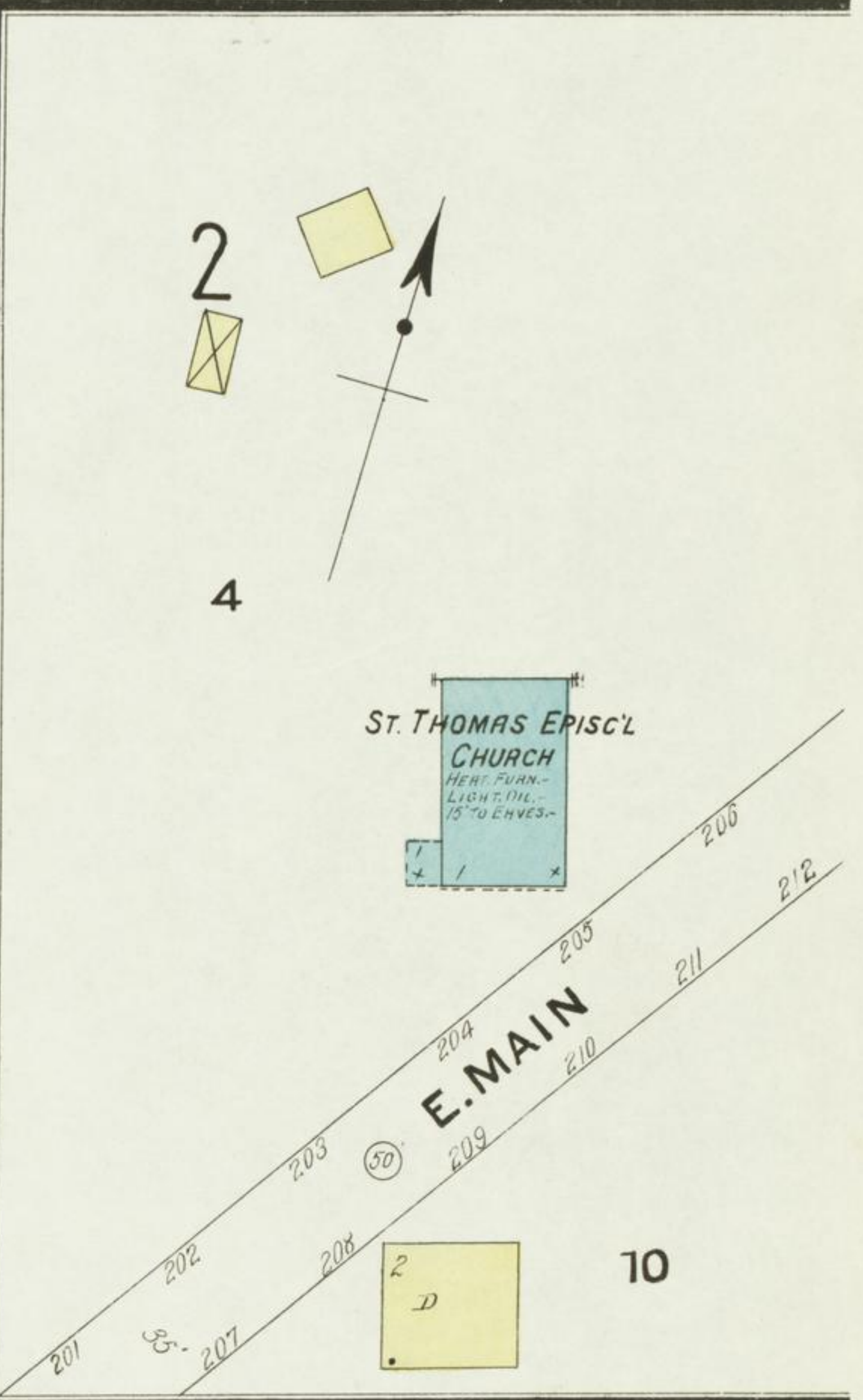
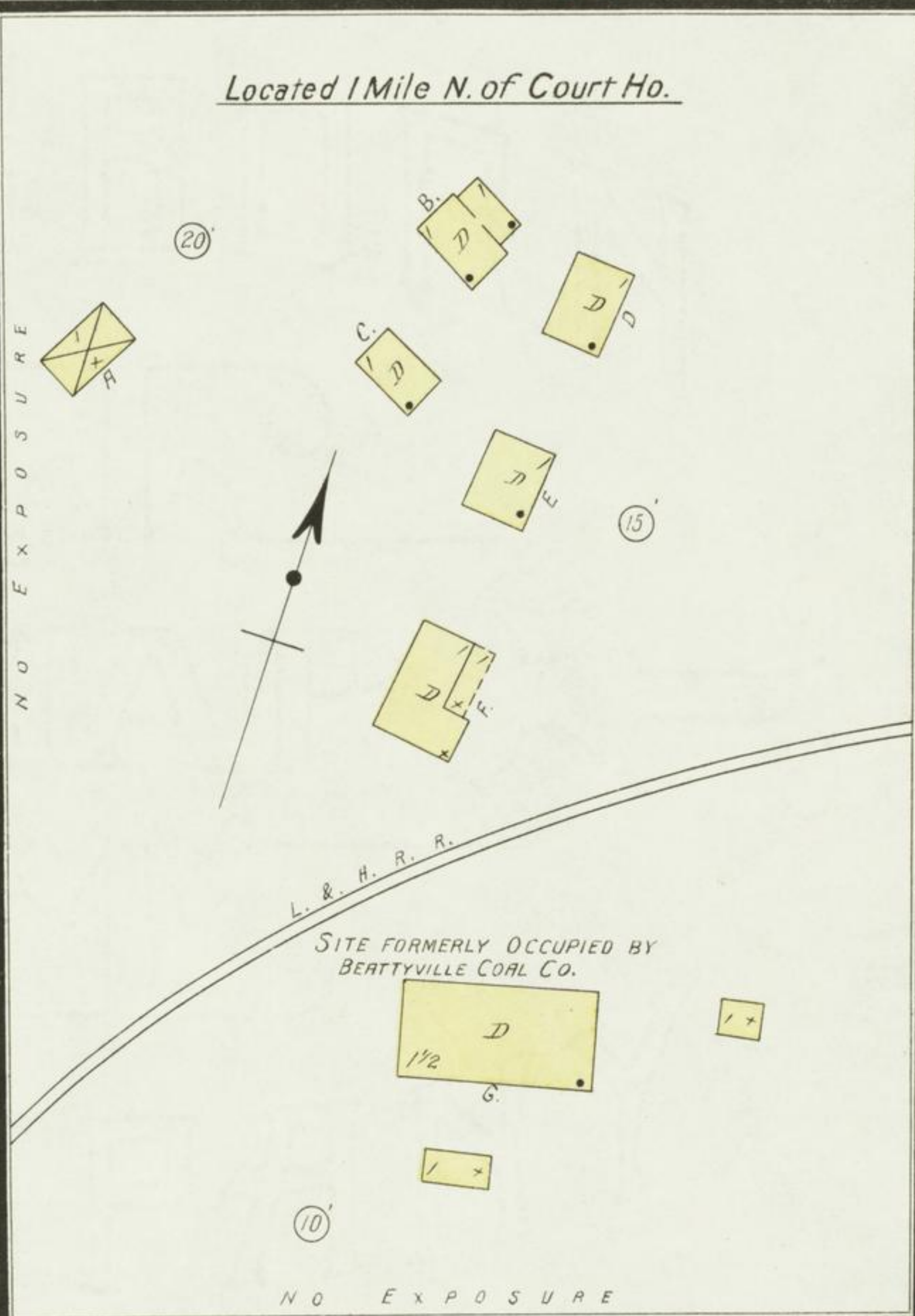
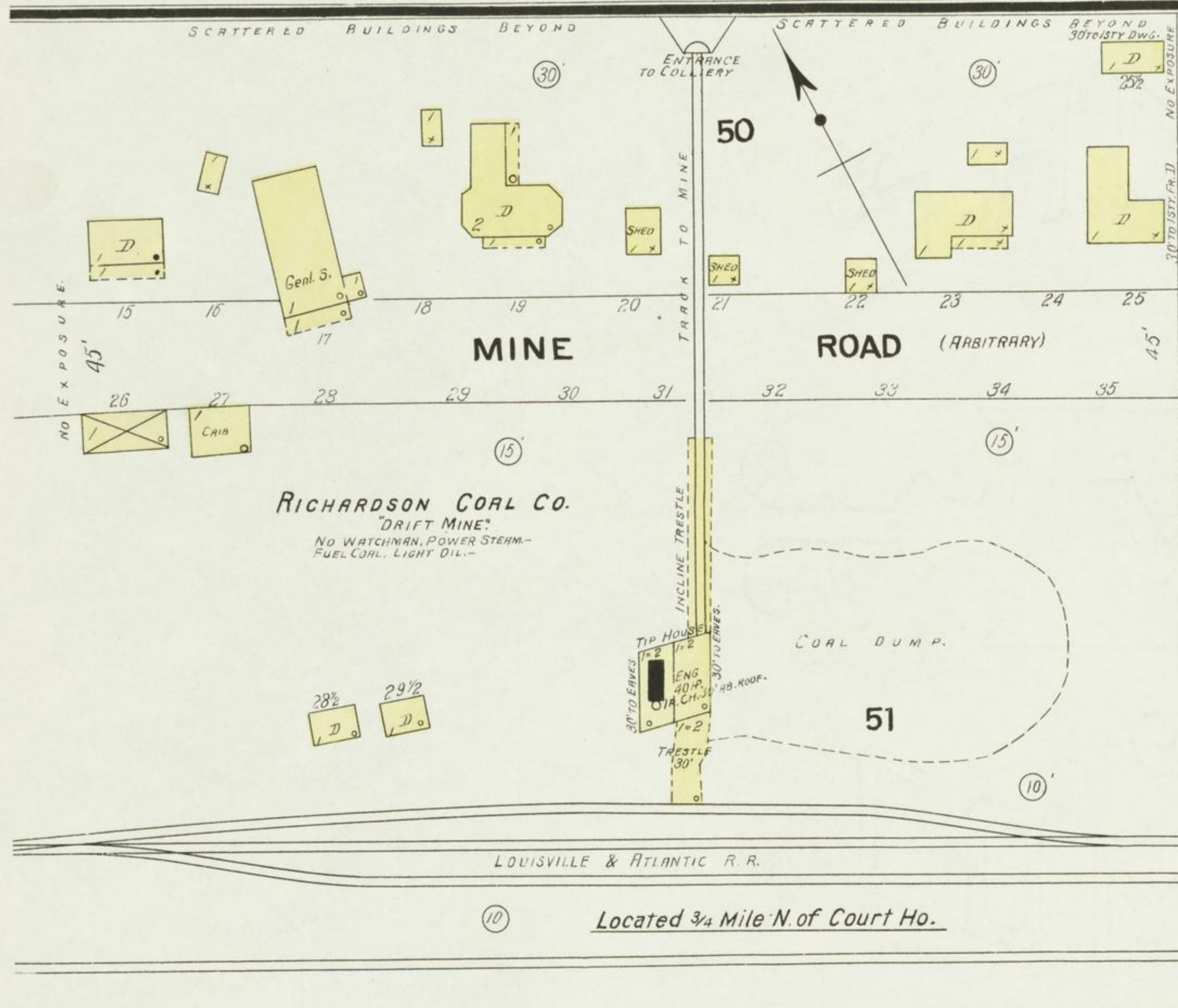
KEY

- NUMBER OF STORIES
- TEMPERATURE
- SLAT WITH ROOF
- ROOF CORNICE
- STANDARD
- OPENING WITH IRON DOOR
- IRON DOOR
- WINDOWS & IRON SHUTTERS
- WINDOW - 1ST STORY
- WINDOWS 1ST & 2ND STORIES
- 2 1/2 & 4 1/2

BUILDINGS COLORED YELLOW ARE FRAME
 RED BRICK
 BLUE STONE
 GRAY IRON
 BROWN ADOBE
 GREEN SPECIALS

(S) INDICATE RELATIVE HEIGHTS
 (F) FIRE STATION, AS SHOWN ON KEY MAP
 ALTERNATE STREET NUMBERS ARE ACTUAL
 CONSECUTIVE STREET NOS ARE ARBITRARY

Map Division
MAR 25 1908
Library of Congress



Kentucky River

