

COUNTY GOVERNMENTAL ORGANIZATION IN KENTUCKY (1937)

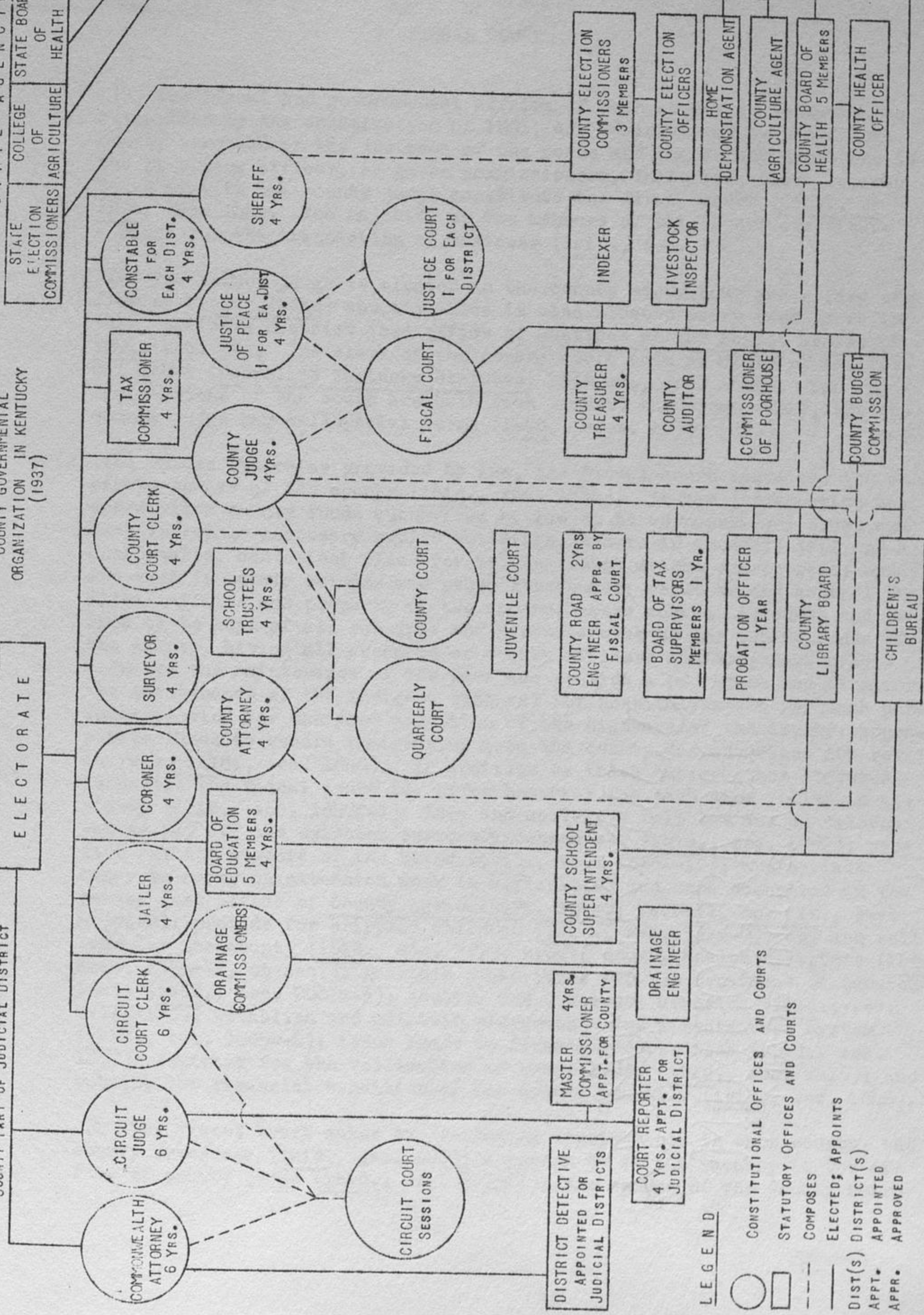
ELECTORATE

COUNTY PART OF JUDICIAL DISTRICT

COUNTY BOARD OF AGRICULTURE

COUNTY BOARD OF HEALTH

COUNTY BOARD OF PUBLIC WELFARE



LEGEND

- CONSTITUTIONAL OFFICES AND COURTS
- STATUTORY OFFICES AND COURTS
- - - COMPOSES
- ELECTED; APPOINTS
- DIST(S) DISTRICT(S)
- APPT. APPOINTED
- APPR. APPROVED